

Nurturing Compassion:

Investing in Trauma Informed Care
through Community Engagement

Tate Ringer
Andrew Ahles, LMFT-S



June 18th, 2024

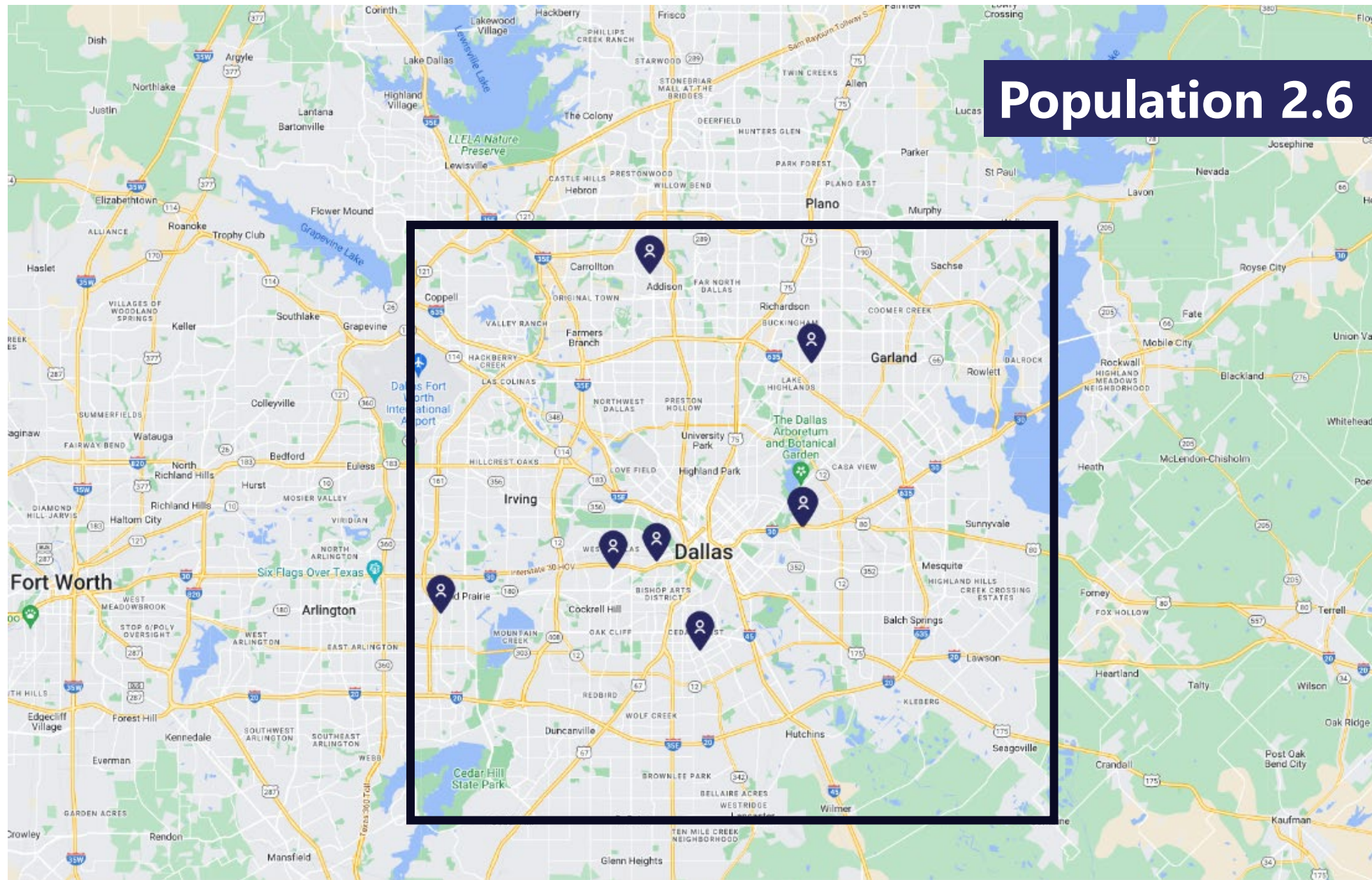
Check in Code:




An aerial photograph of the Denver skyline. In the foreground on the left, the Coors Field tower stands out with its distinctive spherical top. The background is filled with a dense cluster of skyscrapers, including the Aon Center and the Bank of America Tower. The city is surrounded by greenery and a highway is visible in the lower part of the image.

What other organizations of any type do the individuals we serve interact with in any given month?

Population 2.6 million



An aerial photograph of a city skyline, likely Chicago, featuring the Willis Tower and the NBC Tower. Overlaid on the image are ten colored boxes, each containing text representing a different sector or organization. The boxes are arranged in a grid-like pattern across the image. The colors of the boxes are teal and dark blue.

MH and IDD
Agencies

City/County
Services

Hospitals

Law Enforcement

State and Federal
Agencies

Local
Businesses

Education
Systems

Community
Groups

Houses of
Worship

Employers

Charitable
Organizations

Learning Objectives

- **Describe** Trauma Informed, Compassionate Communities and their importance in increasing societal well-being
- **Examine** how CMHCs can work to create stronger communities through strategic engagement with community partners
- **Empower** participants through practical skills, useful tools, and actionable plans and ideas to be leaders in building a compassionate community

Trauma Informed & Compassionate Communities



Reflection

Take a couple of minutes to write your own answers to the following questions:

- What do compassion and trauma informed care mean to you?
- How would you know that your organization and community were trauma informed?
- How would you most like your organization and community to grow in its capacity to be trauma informed?



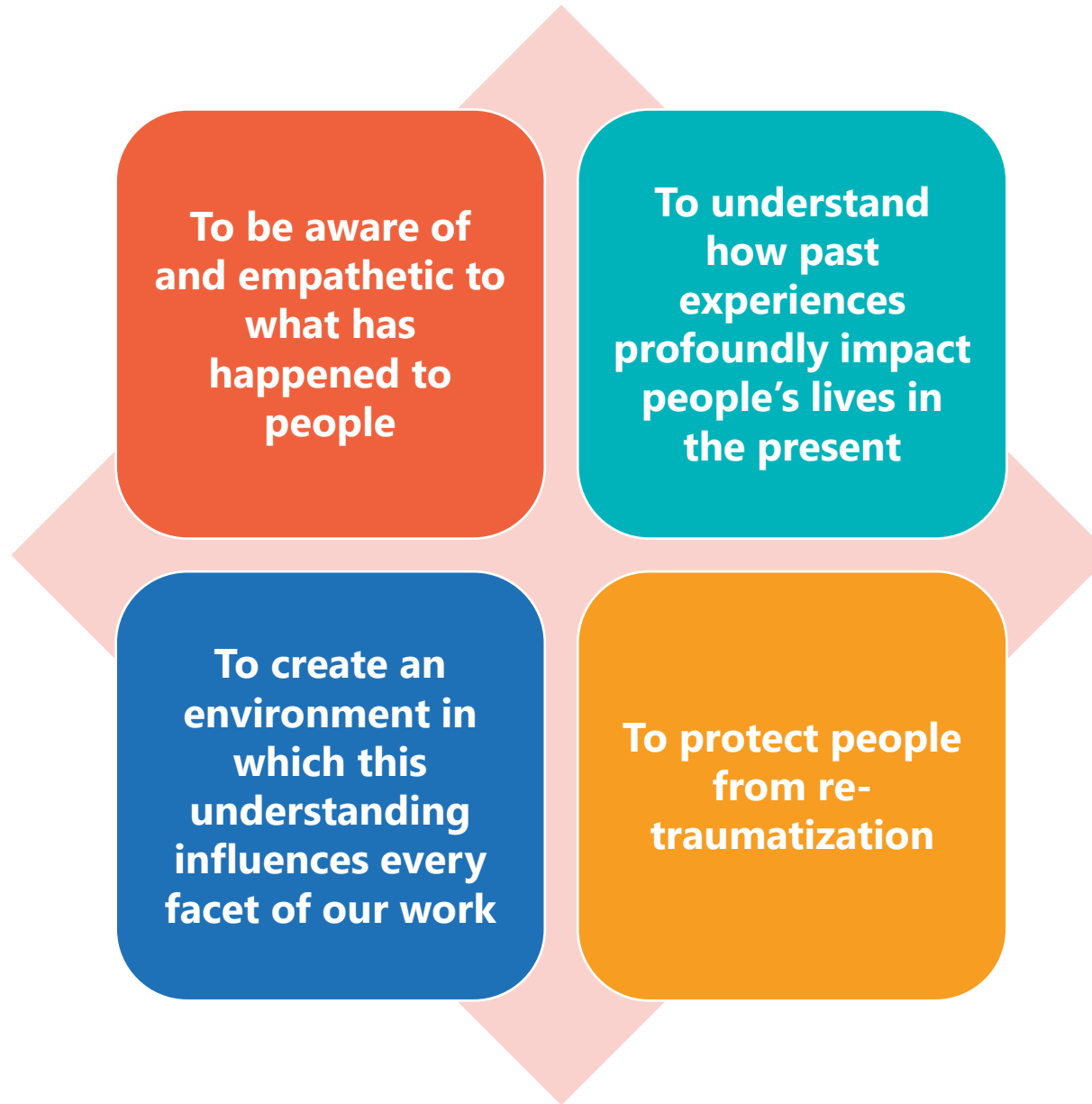
Everyone has a Story



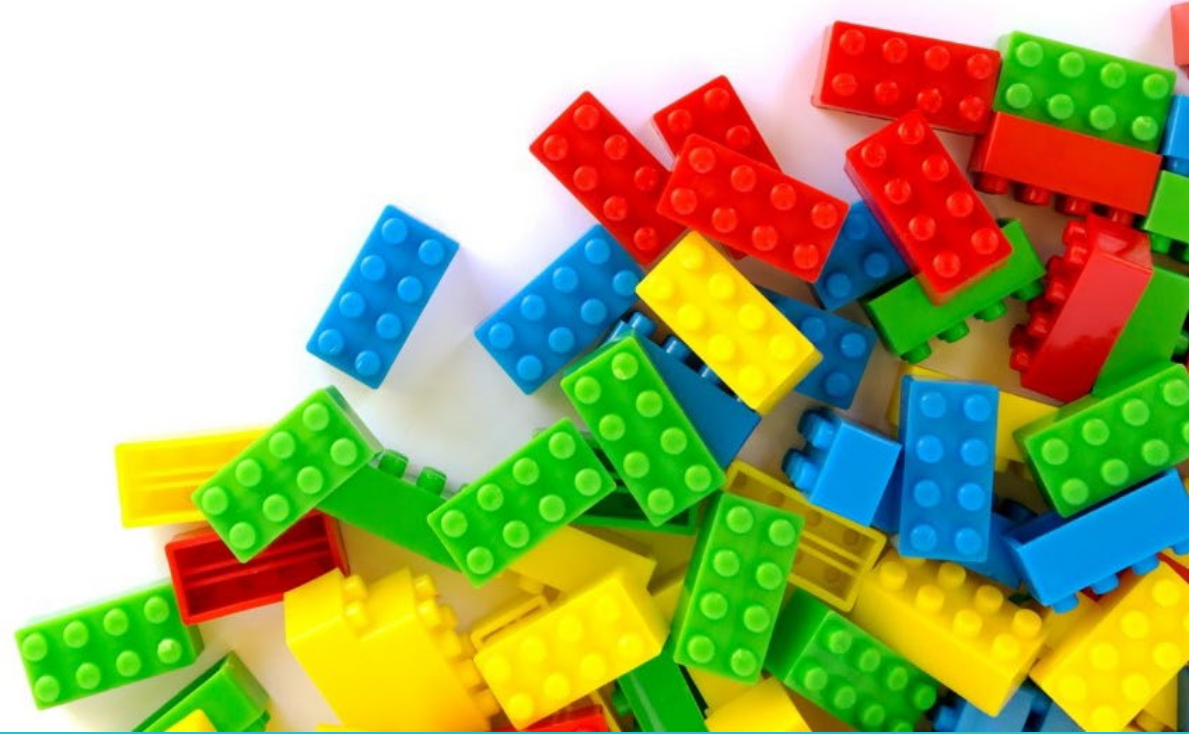


Alicia's Story

Trauma Informed Care



Principles of Trauma-Informed Care



A close-up, profile shot of a woman with long, dark, curly hair. She has her eyes closed and a serene expression, suggesting she is meditating or practicing mindfulness. The background is a soft-focus view of a body of water at sunset or sunrise, with warm, golden light reflecting off the surface. A dark blue banner is positioned at the bottom left of the image.

Awareness



Listening

Empathy



Curiosity

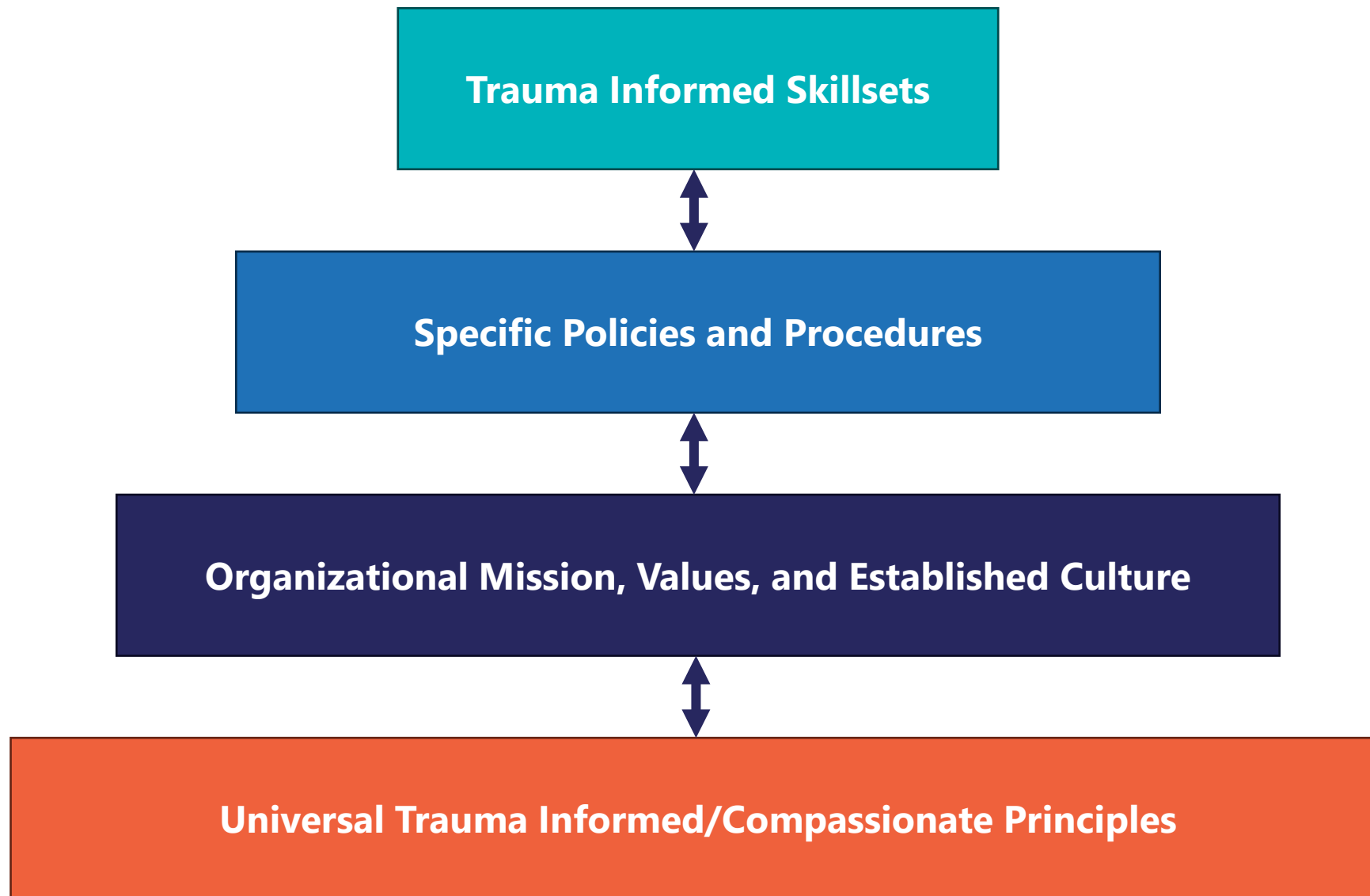




Sanctuary

A woman with dark hair, wearing a vibrant red headscarf and a matching red top, is shown in profile. She is smiling and looking upwards, with her right hand raised towards her head. The background is a blurred city street with buildings and warm, golden lights, suggesting a sunset or sunrise setting. The overall mood is one of joy and empowerment.

Empowerment



Effective Collaboration and Strategic Engagement





DALLAS INTERNATIONAL
STREET CHURCH



MEN OF NEHEMIAH



Community Partnerships



Dallas City Council District 4 Event



On April 18th, Dallas City Council District 4 held a Public Safety Community Engagement event. Thank you to our very own Tanya Sanders and Xavier Woodson for representing Metrocare!

The topics discussed include community involvement, statistics on murders, resources available, and gun violence in District 4.

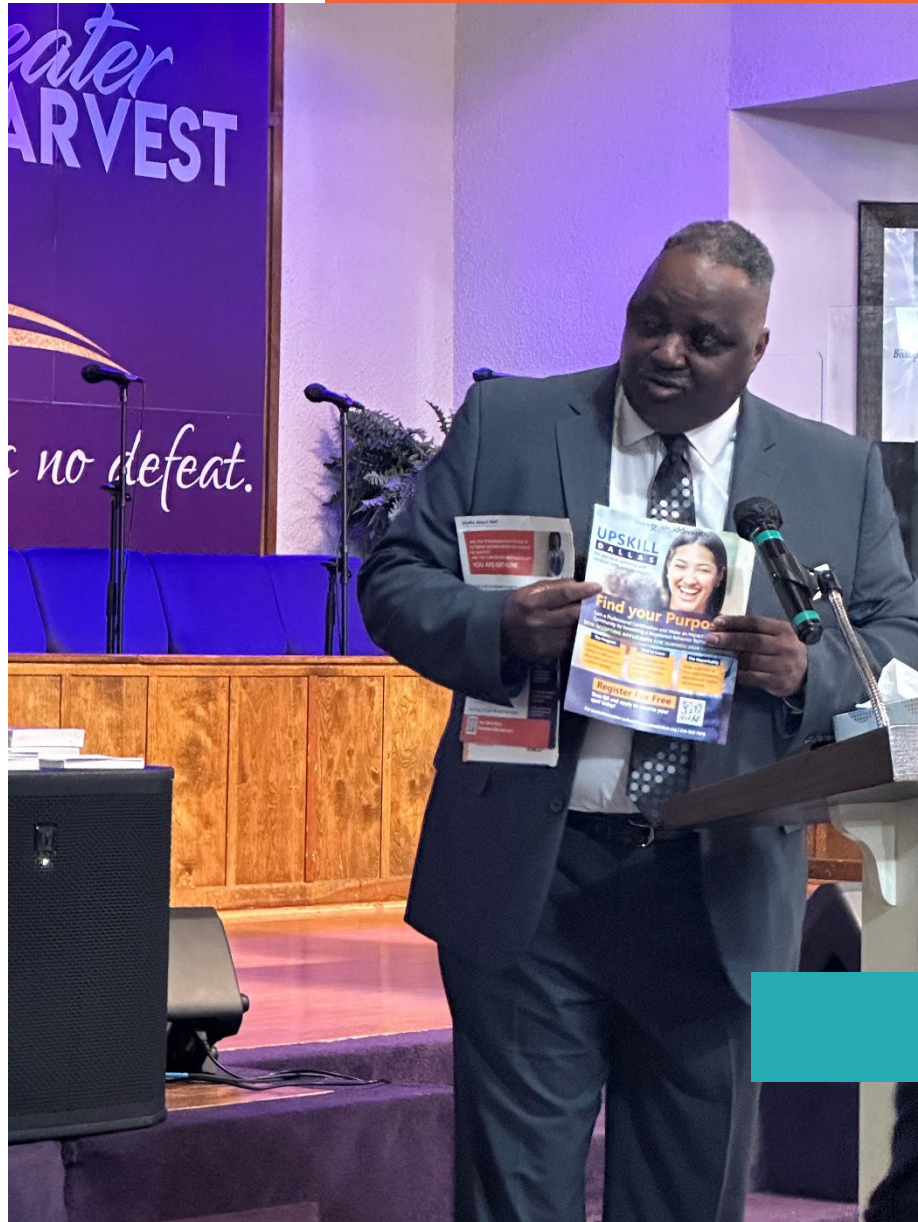
Community Partnerships



Community Partnerships



Offering Expertise



Offering Expertise



Integrated Care across Organizations

Small Group Discussion

What are the barriers to community collaboration?



What have been your organizational strategies for community engagement?



Practical Tools



Provide specific skills





Invest in your team



Be adaptable



What has worked well for your organization?

What are your next action steps?

Thanks for
Coming!

Don't forget
your
evaluation!

