



TEXAS COUNCIL OF
COMMUNITY CENTERS

2026 TEXAS COUNCIL CONFERENCE



TABLE OF CONTENTS

Welcome	01
Exhibitors & Sponsors	02
Continuing Education	04
Pre-Conference Activities	07
Schedule at a Glance	08
General Sessions	12
Special Events	14
Poster Sessions	16
Concurrent Sessions	19
<i>Wednesday, June 10, 3:30-5:00 p.m.</i>	19
<i>Thursday, June 11, 10:30 a.m. -12:00 p.m.</i>	23
<i>Thursday, June 11, 1:30-3:00 p.m.</i>	27
<i>Thursday, June 11, 3:30-5:00 p.m.</i>	31
Frank M. Adams Awards	36
Committees	42
Hotel Map	44
See You Next Year!	Back Cover

WELCOME

TO THE 2026 TEXAS COUNCIL CONFERENCE!



On behalf of the Texas Council of Community Centers Board of Directors, welcome to the 2026 Texas Council Conference at the Grand Hyatt in San Antonio. We are honored to gather with leaders, partners, advocates, and professionals from across our system of care who share a commitment to improving the health and well-being of Texans.

This year's conference reflects both the strengths of our system and the innovation shaping the future of behavioral health and intellectual and developmental disability services across Texas. Over the next several days, we hope you find opportunities to learn, collaborate, and reconnect with colleagues dedicated to this important work.

We are especially pleased to welcome our keynote speaker, Chet Garner, host of the television series, *The Daytripper*. Through his

stories celebrating the beauty, character, and spirit of Texas, he will inspire us as we reflect on our mission, our partnerships, and the communities we serve.

On Thursday morning, we are honored to hear from Executive Commissioner Stephanie Muth, preceded by a panel discussion highlighting our Community Center system's response to the Kerrville flood. Their experience underscores the resilience, compassion, and collaboration demonstrated across our system every day.

Throughout Wednesday and Thursday, breakout sessions will feature best practices, emerging innovations and practical strategies led by experts from within our system of care, as well as partner organizations united in advancing quality services and supports for Texans.

One of the most meaningful traditions of our conference, the Frank M. Adams Awards, will take place during Thursday evening's Center Reception. These awards recognize the extraordinary volunteerism that makes a lasting difference in the lives of individuals, families, and communities throughout our state.

We extend our sincere appreciation to our conference co-hosts, Camino Real Community Services and The Center for Health Care Services, for their partnership and for powering the volunteer support that makes this event possible. We also encourage you to visit our exhibitors and sponsors, whose contributions and innovative solutions help advance our shared mission.

Thank you for joining us and for your ongoing dedication to the individuals, families, and communities we serve. We hope your time in San Antonio is meaningful, energizing, and filled with valuable conversations, shared ideas, and renewed inspiration for the work ahead.

A handwritten signature in black ink that reads "Drue Farmer". The signature is fluid and cursive, written in a professional style.

THE HONORABLE DRUE A. FARMER JUDGE (RET.)
Chair, Texas Council of Community Centers Board of Directors
Immediate Past Chair & Trustee, StarCare Specialty Health System

2026 SPONSORS

EVENT LEVEL



PLATINUM LEVEL



GOLD LEVEL



SILVER LEVEL



BRONZE LEVEL



2026 EXHIBITORS

- 3H Leadership Consulting
- Amazon Business
- Braeburn
- Cedar Crest Hospital & RTC
- Chorus Innovations
- Clinically AI
- Connected Health Care
- Consilium Staffing
- ContinuumCloud
- Doximity Talent Solutions
- East Texas Behavioral Healthcare Network
- Eleos Health
- exydoc
- FirstNet Built with AT&T
- Form Communities
- Genoa Healthcare
- Integrated Prescription Management
- Integrated Psychiatric Consultants
- Iris Telehealth
- ISC Group, Inc.
- MarshMcLennan Agency
- Mend
- Motivo Health
- National University
- Netsmart
- Notenetic EHR
- Ntracts
- PAM Voyages of Sugar Land
- Pondurance
- Prosumers International
- Qualifacts
- Relias
- Schooley Mitchell
- SpectraCorp
- Streamline Healthcare Solutions, LLC
- symplr
- Tarrytown Expocare Pharmacy
- Tejas Behavioral Health Management Association
- Texas Applications Specialists, Inc.
- Texas Comptroller of Public Accounts - Texas ABLE Program
- Texas Council Risk Management Fund
- Texas Health Services Authority
- The Wood Group
- Therap Services
- Wellpoint



CONTINUING EDUCATION



TEXAS
Health and Human
Services

**Texas Department of State
Health Services**

Continuing Education Credits
Co-Sponsored by DSHS

The following types of continuing education credit are offered:

- Social Work (SW)
- Licensed Professional Counselor (LPC)
- Licensed Marriage and Family Counselor (LMFT)
- Continuing Medical Education (CME)
- Nursing Continuing Professional Development (NCPD)
- Professional Development for Licensed Psychologists (LP)
- Continuing Legal Education (CLE)
- Continuing Professional Education for Accountants (CPE)
- Licensed Chemical Dependency Counselors (LCDCs)
- Peers, Family Partners, and Peer Supervisors (MHPS/RSPS/PSS/CFP)

Requirements for all types of continuing education credit:

1. Check in to a qualifying session via the Texas Council Conference app.
2. Complete the session evaluation provided by the app after the session ends

Unless noted otherwise below, certificates will be emailed via Eventur, the Texas Council Conference app platform.

Credits for Social Work/LPC/LMFT

Social Work, Licensed Professional Counselor (LPC) and Licensed Marriage and Family Therapist (LMFT) continuing education credits are offered for general sessions on Thursday, June 11 and Friday, June 12, and all breakout sessions.

Credits for CME, NCPD, and Licensed Psychologists

CONTINUING MEDICAL EDUCATION:

This activity has been planned and implemented in accordance with the accreditation requirements and policies of the Texas Medical Association (TMA) through the joint providership of The Texas Department of State Health Services Continuing Education Program and Texas Council of Community Centers. The Texas Department of State Health Services Continuing Education Program is accredited by TMA to provide continuing medical education for physicians.

The Texas Department of State Health Services Continuing Education Program designates this live activity for a maximum of 6.00 *AMA PRA Category 1 Credits™*. Physicians should claim only the credit commensurate with the extent of their participation in the activity.

CONTINUING EDUCATION

NURSING CONTINUING PROFESSIONAL DEVELOPMENT:

The Texas Department of State Health Services Continuing Education Program is accredited as a provider of nursing continuing professional development by the American Nurses Credentialing Center's Commission on Accreditation.

The Texas Department of State Health Services Continuing Education Program has designated a maximum of 6.00 contact hours of Nursing Continuing Professional Development.

This activity is a Joint Providership between The Texas Department of State Health Services Continuing Education Program and Texas Council of Community Centers.

LICENSED PSYCHOLOGISTS:

The Texas Department of State Health Services Continuing Education Program has designated a maximum of 6.00 contact hours for Licensed Psychologists.

CERTIFICATE OF ATTENDANCE:

The Texas Department of State Health Services Continuing Education Program has designated a maximum of 6.00 hours for attendance.

Credits for Continuing Legal Education (CLE)

This course has been approved for Minimum Continuing Legal Education credit by the State Bar of Texas Committee on MCLE in the amount of 7.50 credit hours, of which 0.0 credit hours will apply to legal ethics/professional responsibility credit.

The following sessions are approved for 1.5 CLE hours each:

- Trustee Roles and Responsibilities, Wednesday, June 10, 2026, from 3:30 - 5:00 p.m.
- Autism in Criminal Justice Settings, Thursday, June 11, 2026, from 10:30 a.m. - Noon
- Insight into the Texas Political Landscape, Thursday, June 11, 2026, from 1:30 - 3:00 p.m.
- Emergency Detention Law: Law, Practice, and Cross-System Coordination, Thursday, June 11, 2026, from 3:30 - 5:00 p.m.
- State Budget and Legislative Update, Friday, June 12, 2026, from 8:30 - 10:00 a.m.

Credits for Continuing Professional Education (CPE)

The following sessions have been approved for 1.8 hours each of non-technical Continuing Professional Education (CPE) for Accountants. No prerequisites required.

1. All 90-minute breakout sessions (1.8 hours each)
2. State Budget and Legislative Update, Friday, June 12, 2026, from 8:30 - 10:00 a.m.

CPE Certificates will be distributed by the credit provider, Tropical Texas Behavioral Health, after the conference.

CONTINUING EDUCATION

Credits for Licensed Chemical Dependency Counselors (LCDCs)

The following sessions have been approved for 1.5 credit hours each for LCDCs. All credits are general education hours unless otherwise noted.

- Wednesday, June 10, 2026, 3:30 - 5:00 p.m.
 - » Addiction 2026: New Substances, New Treatments
- Thursday, June 11, 2026, 10:30 a.m. - Noon
 - » The Crystal Clear Story, Science, and Impact of Meth
- Thursday, June 11, 2026, 1:30 - 3:00 p.m.
 - » Insight into the Texas Political Landscape
 - » Relational Leadership: Trauma-Wise Principles and Coaching for Staff Engagement
 - » The Echo of Pain: How We Carry What We Hear
- Thursday, June 11, 3:30 - 5:00 p.m.
 - » Formula 6: Understanding Alcohol Use Disorder - History, Harm, and Hope
- Friday, June 12, 2026, 8:30 - 10:00 a.m.
 - » State Budget and Legislative Update

Credits for Peers, Family Partners, and Peer Supervisors (MHPS/RSPS/PSS/CFP)

The following sessions have been approved for credit hours for MHPS/RSPS/PSS/CFP. All credits are general education hours unless otherwise noted.

- Wednesday, June 10, 2026, 3:30 - 5:00 p.m.
 - » From Barriers to Bridges: Expanding Career Pathways through Peer-to-Career
- Thursday, June 11, 2026, 10:30 a.m. - Noon
 - » Beyond a Seat at the Table: Meaningful Engagement in Planning and Network Advisory Committees (PNACs)
- Thursday, June 11, 2026, 1:30 - 3:00 p.m.
 - » Insight into the Texas Political Landscape
- Thursday, June 11, 2026, 3:30 - 5:00 p.m.
 - » Stronger Together: How Peer Support Transforms Veteran Families
- Friday, June 12, 2026, 8:30 - 10:00 a.m.
 - » State Budget and Legislative Update
- Friday, June 26, 2025, 1:30 - 4:30 p.m.
 - » Peer Post-Conference Training (4.0 hours general credit offered)

Additionally, Texas Administrative Code allows individuals to also receive credit from any training approved for continuing education for a mental health or substance use disorder professional if the training is also relevant to the skills required of, or services provided by, a peer specialist.

See the CE Desk to request more information.

PRE-CONFERENCE ACTIVITIES

WEDNESDAY, JUNE 10, 2026

CONSORTIA MEETINGS

8:30 a.m. - 12:00 p.m.

- Financial Management (CFOs) Consortium
Lone Star C, 2nd Floor
- Intellectual and Developmental Disabilities (IDD) Consortium
Lone Star A, 2nd Floor
- Medical Services (MS) Consortium and Nursing Committee
Lone Star B, 2nd Floor

CLOSED WORKGROUP MEETINGS

8:30 a.m. - 12:00 p.m.

- Executive Assistants/Board Liaison Special Interest Group (BL-SIG)
Crockett CD, 4th Floor
- Communications Special Interest Group (Comm-SIG)
Crockett AB, 4th Floor

PRE-CONFERENCE SESSIONS

8:30 a.m. - 12:00 p.m.

Mental Health First Aid (MHFA) Session
Texas D, 4th Floor

Featuring two MHFA USA trainers and staff from the National Council for Mental Wellbeing, Tramaine El-Amin and Janicanne Shane, this engaging event will offer discussions about:

- The Latest Updates to MHFA and Teen MHFA (tMHFA)
- Self-Care for Outreach Workers
- Reaching Further to Expand Outreach and Touch New Communities

We will also proudly celebrate Texas Council receiving the MHFA Impact Organization of the Year Award, recognizing the extraordinary dedication, passion, and impact Outreach Workers continue to make across the state.

Come ready to learn, connect, celebrate, and be inspired as we continue building stronger, healthier communities together.

SPEAKERS:

- Janet Paleo, Director of Government Relations for Recovery-Based Services, Texas Council of Community Centers
- Tramaine El-Amin, Vice President for MHFA USA, The National Council for Mental Wellbeing
- Janicanne Shane, Director of Client Success for MHFA USA, The National Council for Mental Wellbeing



SCHEDULE AT A GLANCE

DAY 1, WEDNESDAY, JUNE 10, 2026

Time	Activities		
7:30 a.m. - 5:00 p.m.	Registration Texas Ballroom Foyer, 4th Floor <i>Breakfast on Your Own</i>		
8:30 a.m. - 12:00 p.m.	Consortium & Workgroup Meetings <table border="1" style="width: 100%; border-collapse: collapse;"> <tr> <td style="width: 50%; vertical-align: top;"> Consortium Meetings <ul style="list-style-type: none"> • IDD Room: Lone Star A, 2nd Floor • Medical Services/Nursing Committee Room: Lone Star B, 2nd Floor • Financial Management/CFO Consortium Room: Lone Star C, 2nd Floor </td> <td style="width: 50%; vertical-align: top;"> Workgroup Meetings <ul style="list-style-type: none"> • Board Liaisons Special Interest Group (BL-SIG) Room: Crockett CD, 4th Floor • Communications Special Interest Group (Comm-SIG) Room: Crockett AB, 4th Floor • Mental Health First Aid (MHFA) Room: Texas D, 4th Floor </td> </tr> </table>	Consortium Meetings <ul style="list-style-type: none"> • IDD Room: Lone Star A, 2nd Floor • Medical Services/Nursing Committee Room: Lone Star B, 2nd Floor • Financial Management/CFO Consortium Room: Lone Star C, 2nd Floor 	Workgroup Meetings <ul style="list-style-type: none"> • Board Liaisons Special Interest Group (BL-SIG) Room: Crockett CD, 4th Floor • Communications Special Interest Group (Comm-SIG) Room: Crockett AB, 4th Floor • Mental Health First Aid (MHFA) Room: Texas D, 4th Floor
Consortium Meetings <ul style="list-style-type: none"> • IDD Room: Lone Star A, 2nd Floor • Medical Services/Nursing Committee Room: Lone Star B, 2nd Floor • Financial Management/CFO Consortium Room: Lone Star C, 2nd Floor 	Workgroup Meetings <ul style="list-style-type: none"> • Board Liaisons Special Interest Group (BL-SIG) Room: Crockett CD, 4th Floor • Communications Special Interest Group (Comm-SIG) Room: Crockett AB, 4th Floor • Mental Health First Aid (MHFA) Room: Texas D, 4th Floor 		
12:00 p.m. - 1:00 p.m.	Lunch <i>On your own</i>		
1:00 p.m. - 3:00 p.m.	Opening Session - Welcome and Keynote by Chet Garner Room: Lone Star Ballroom, 2nd Floor		
3:00 p.m. - 3:30 p.m.	Break Texas Ballroom Foyer, 4th Floor		
3:30 p.m. - 5:00 p.m.	Concurrent Sessions <ul style="list-style-type: none"> • Addiction 2026: New Substances, New Treatments Room: Texas D, 4th Floor • Artificial Intelligence: A Cohort Review of the Current AI Landscape for CCBHCs Room: Seguin, 4th Floor • Bringing Care Home: A Pilot Program Integrating Psychiatry and Nursing Care Room: Lone Star B, 2nd Floor • From Barriers to Bridges: Expanding Career Pathways through Peer-to-Career Room: Crockett AB, 4th Floor • Making it Matter: Building Community through Media Room: Republic BC, 4th Floor • Modernizing IDD Services: A Data-Driven Model for Tomorrow's Local IDD Authorities Room: Lone Star A, 2nd Floor • Responding to Self-Harm for High Needs Populations Room: Crockett CD, 4th Floor • Transitional Rent and Intensive Services: A Community Stabilization Approach Room: Lone Star C, 2nd Floor • Trustee Roles and Responsibilities Room: Republic A, 4th Floor 		
6:00 p.m. - 7:30 p.m.	Board & ED/CEO Reception (<i>Invitation Only</i>) Presidio ABC, 3rd Floor		
7:30 p.m. - 9:00 p.m.	ED/CEO Dinner (<i>Invitation Only</i>) Acenar Mexican Restaurant		

SCHEDULE AT A GLANCE

DAY 2, THURSDAY, JUNE 11, 2026

Time	Activities
7:30 a.m. - 5:00 p.m.	Registration Texas Ballroom Foyer, 4th Floor
7:30 a.m. - 8:30 a.m.	Continental Breakfast (Exhibit Hall) Texas A, 4th Floor
8:00 a.m. - 5:00 p.m.	<p>Poster Sessions Texas Ballroom Foyer, 4th Floor</p> <ul style="list-style-type: none"> • Blurred Lines: Managing the Workforce via Multiple Lenses • Brushstrokes of Healing: Leveraging Art and History to Engage Veterans' Mental Health Care • Don't Ignore the Flashing Red Lights: Using Data to Drive Safety Plan Compliance • Everyone Has a Role: Building Collaboration and Trust in Overdose Prevention • Expanding Access: A Collaborative Grant Funding Framework • Five Leadership Principles in Implementing a New Program • Mental Health Stigma in the Latino Community • Occupational Therapy in Child and Adolescent Behavioral Health: Lessons from the Heart of Texas
8:30 a.m. - 10:00 a.m.	<p>General Session: Featured Panel Presentation Lone Star Ballroom, 2nd Floor</p> <p>Special Guest Speaker: HHSC Executive Commissioner Stephanie Muth</p>
10:00 a.m. - 10:30 a.m.	Break (Exhibit Hall) Texas A, 4th Floor
10:30 a.m. - 12:00 p.m.	<p>Concurrent Sessions</p> <ul style="list-style-type: none"> • Autism in Criminal Justice Settings Room: Texas D, 4th Floor • Beyond a Seat at the Table: Meaningful Engagement in Planning and Network Advisory Committees (PNACs) Room: Seguin, 4th Floor • Building the First Multidisciplinary Peer Support Team After the Kerrville Flood Room: Lone Star B, 2nd Floor • Culture by Design: How Gulf Coast Center Brought Just-in-Time Rapid Access Psychiatry Scheduling to Life Room: Lone Star A, 2nd Floor • Financial Innovation for Local IDD Authorities in a Cost-Conscious Era Room: Crockett AB, 4th Floor • From Silos to Synergy: Advancing Patient-Centered Systems of Care Room: Lone Star C, 2nd Floor • The Crystal Clear Story, Science, and Impact of Meth Room: Crockett CD, 4th Floor • Therapeutic Discord Room: Republic A, 4th Floor • Transitioning from a Co-Worker to Supervisor Room: Republic BC, 4th Floor
12:00 p.m. - 1:30 p.m.	Lunch (Exhibit Hall) Texas Ballroom A, 4th Floor

SCHEDULE AT A GLANCE

DAY 2, THURSDAY, JUNE 11, 2026

Time	Activities
1:30 p.m. - 3:00 p.m.	<p>Concurrent Sessions</p> <ul style="list-style-type: none"> • Bridging Gaps: Advancing Community Services Using the Sequential Intercept Model Room: Republic BC, 4th Floor • Efficiency Meets Empathy: Improving Outcomes through Treatment and Support Room: Lone Star C, 2nd Floor • From Toxic to Trustworthy: Cultivating Psychologically Safe Workplaces Room: Crockett AB, 4th Floor • Insight into the Texas Political Landscape Room: Texas D, 4th Floor • Relational Leadership: Trauma-Wise Principles and Coaching for Staff Engagement Room: Seguin, 4th Floor • The Clinic Comes to You: Removing Barriers with Mobile Behavioral Health Room: Lone Star B, 2nd Floor • The Echo of Pain: How We Carry What We Hear Room: Lone Star A, 2nd Floor • What if Crisis Care Didn't Start in an Emergency Room or a Jail? Room: Crockett CD, 4th Floor
3:00 p.m. - 3:30 p.m.	<p>Break (Exhibit Hall) Texas A, 4th Floor</p>
3:30 p.m. - 5:00 p.m.	<p>Concurrent Sessions</p> <ul style="list-style-type: none"> • 988 Updates and Impact in Texas Room: Lone Star B, 2nd Floor • Bridging the Divide: Supporting the Mental Health Needs of Youth with Developmental Disabilities Room: Texas D, 4th Floor • Data-Driven Care: Integrating Research to Enhance CCBHC Care and Sustainability Room: Republic A, 4th Floor • Emergency Detention in Texas: Law, Practice, and Cross-System Coordination Room: Lone Star C, 2nd Floor • Formula 6: Understanding Alcohol Use Disorder - History, Harm, and Hope Room: Crockett AB, 4th Floor • Leading from the Middle: A Proven Model for Building Measurable Leadership Room: Lone Star A, 2nd Floor • Lights, Camera, Confidence: Media and Storytelling 101 Room: Crockett CD, 4th Floor • Strategic Stewardship: Managing Facilities for Safety, Efficiency, and Resilience Room: Republic BC, 4th Floor • Stronger Together: How Peer Support Transforms Veteran Families Room: Seguin, 4th Floor
6:00 p.m. - 7:30 p.m.	<p>Center Reception and Frank M. Adams Awards Presentation Lone Star Ballroom, 2nd Floor</p>

SCHEDULE AT A GLANCE

DAY 3, FRIDAY, JUNE 12, 2026

Time	Activities
7:30 a.m. - 12:00 p.m.	Registration Texas Ballroom Foyer, 4th Floor
7:30 a.m. - 8:30 a.m.	Continental Breakfast Texas EF, 4th Floor
8:30 a.m. - 10:00 a.m.	General Session: The Road Ahead: Preparing for the 90th Legislative Session Lone Star Ballroom, 2nd Floor
12:30 p.m. - 1:15 p.m.	Lunch (Peer Participants Only) Texas D, 4th Floor
1:30 p.m. - 4:30 p.m.	Peer Post-Conference Training: The Four Pillars of Peer Support Communication Texas D, 4th Floor Featuring Dr. Sandra Smith on Justice-Involved Peer Support Certification

GENERAL SESSIONS

WEDNESDAY, JUNE 10, 2026 | 1:00 - 3:00 P.M.

Welcome: Councilwoman Teri Castillo



Councilwoman Teri Castillo proudly represents San Antonio's District 5 and is recognized for her commitment to advancing policies that strengthen communities, expand access to essential services, and improve outcomes for working families. A lifelong resident of District 5, Castillo brings a community-centered approach to public service grounded in advocacy, collaboration, and equity.

Since taking office in 2021, she has championed policies and investments in infrastructure, community safety, workforce development, and supportive services designed to help residents thrive while preserving the cultural and historic identity of San Antonio neighborhoods. Before serving on City Council, she worked in public education and community organizing, advocating for healthcare access and housing affordability for underserved Texans.



Judge Drue Farmer

Chair, Board of Directors,
Texas Council of Community Centers



Lee Johnson

Chief Executive Officer,
Texas Council of Community Centers



Jelynn LeBlanc Jamison

Chief Executive Officer,
The Center for Health Care Services

Featured Keynote: Chet Garner



Chet Garner is the creator, host, and executive producer of *The Daytripper*, a 13-time Emmy-award-winning Texas travel show airing on PBS stations across the country.

Born in Comanche and raised in Port Neches, Texas, Chet's love for storytelling began at a young age around the Boy Scout campfire and toting around his grandfather's VHS video camera.

Chet earned a degree in Radio-Television-Film from the University of Texas at Austin and went on to graduate first in his class from Baylor Law School. However, after practicing law for 3 years, he decided to follow his passions and simultaneously inspire folks to appreciate the beauty, history, and food of the Lone Star State.

What followed was a crash course in travel, filmmaking, marketing, and doing whatever it takes to start a successful TV show. When not traveling Chet is at home in

Georgetown, Texas with his wife and 5 children (14, 12, 9, 7, and 3) - although he's usually got them on the road too.

GENERAL SESSIONS

THURSDAY, JUNE 11, 2026 | 8:30 - 10:00 A.M.

When the River Rose: Behavioral Health Response and Recovery After the Hill Country Floods

On July 4, 2025, catastrophic flooding struck the Texas Hill Country. In the early morning hours, intense thunderstorms in Kerr County caused the Guadalupe River to surge more than 26 feet in less than 45 minutes. The disaster claimed at least 135 lives and left entire communities devastated. The impact extended far beyond the riverbanks, creating profound and lasting behavioral health needs for survivors, families, and first responders.

During this session, leaders from Hill Country MHDD Centers, the Local Mental Health Authority (LMHA) serving the region, will share firsthand accounts of the unfolding crisis and the response that followed. Participants will also hear from neighboring LMHAs that rapidly coordinated to assess needs and deploy personnel and resources to the region. The panel will highlight key lessons learned, including the importance of integrated emergency management systems, cross-center collaboration, and strong partnerships with local and state government during large-scale disasters.

Andrew Estrada, BAAS, MPA
Vice President of Crisis Response, The Center for Health Care Services

Dianeth Rodriguez, MA, LPC-S
CCBHC Manager, Tropical Texas Behavioral Health

Marisa Malik, MA, LPC
Director of Crisis Services and Criminal Justice Initiatives, Integral Care

Mike Maples, MA, LPC, LMFT
Chief Executive Officer, Bluebonnet Trails Community Services

Tod Citron, MS, MSW
Chief Executive Officer, Hill Country MHDD Centers

Veronica Sanchez, MA, LPC-S
Executive Director, Camino Real Community Services

Moderator: Lee Johnson, MPA
Chief Executive Officer, Texas Council of Community Centers



Featured Keynote: Executive Commissioner Stephanie Muth

Stephanie Muth was appointed executive commissioner of the Texas Health and Human Services Commission by Governor Greg Abbott, taking leadership of the state's largest agency on Jan. 3, 2026. Muth has more than two decades of state government experience. She previously served as commissioner of the Texas Department of Family and Protective Services and held several executive-level positions at HHSC.

FRIDAY, JUNE 12, 2026 | 8:30 - 10:00 A.M.

The Road Ahead: Preparing for the 90th Legislative Session

What happens at the Texas Capitol impacts every Community Center across the state. Texas Council legislative experts will provide an overview of the current legislative landscape leading up to the 90th Legislative Session. This session will highlight key interim activities shaping the next session, including legislative committee hearings, the Sunset Review process for the Texas Health and Human Services Commission (HHSC), and other developing policy priorities. Participants will also hear an expert update on the state budget outlook, including current revenue projections, emerging fiscal challenges, and what those uncertainties could mean for mental health and IDD services in the future.



Lee Johnson
Chief Executive Officer,
Texas Council of Community Centers



Kelsey Bernstein
Chief of Government Relations,
Texas Council of Community Centers



Eva DeLuna Castro
Senior Budget Analyst and Policy Advisor,
Office of State Representative Donna Howard

SPECIAL EVENTS

MENTAL HEALTH FIRST AID: FIND ALGEE CHALLENGE



Get ready for a fun and interactive way to learn and engage during conference week! Think you can spot ALGEE around the conference? Now's your chance to join the fun!

Throughout the 2026 Texas Council Conference, hidden ALGEE koalas will be placed around the venue. Participants who find an ALGEE koala can snap a selfie and submit it for a chance to win exciting prizes!

How to Play

- Find an ALGEE koala hidden somewhere at the conference
- Take a selfie with your koala
- Scan the QR code on the flyer to submit your photo
- Be entered to win prizes throughout the conference

While you play, remember what ALGEE represents the 5-Step Action Plan learned in Mental Health First Aid:

- A - Assess for risk of suicide or harm
- L - Listen nonjudgmentally
- G - Give reassurance and information
- E - Encourage appropriate professional help
- E - Encourage self-help and other support strategies

WEDNESDAY, JUNE 10, 2026

BOARD AND ED/CEO RECEPTION (INVITATION ONLY)

6:00 p.m. - 7:30 p.m. | Presidio ABC, 3rd Floor

EXECUTIVE DIRECTORS/CHIEF EXECUTIVE OFFICERS DINNER (INVITATION ONLY)

7:30 p.m. - 9:00 p.m.

Ácenar, 146 E Houston St, San Antonio, TX 78205

A private river cruise will transport invited dinner guests to the restaurant, loading at 6:45 p.m. to depart at 7:00 p.m. Conference staff will help direct guests to the boats.

THURSDAY, JUNE 11, 2026

POSTER SESSIONS

8:00 a.m. - 5:00 p.m. | Texas Ballroom Foyer, 4th Floor

Browse posters or strike up a discussion with a colleague in this open educational setting. Presenters will come and go but the posters will be available all day! Full poster session descriptions are available on Page 16.

CENTER RECEPTION

6:00 p.m. - 7:30 p.m. | Lone Star Ballroom, 2nd Floor

The Center Reception is casual dress and open attendance. The Frank M. Adams Awards for Outstanding Volunteerism will be presented, beginning at 6:30 p.m.

Join us for hors d'oeuvres and refreshments and celebrate our amazing volunteers!

SPECIAL EVENTS

FRIDAY, JUNE 12, 2026

THE FOUR PILLARS OF PEER SUPPORT COMMUNICATION

Featuring Dr. Sandra Smith on Justice-Involved Peer Support Certification and Emerging Opportunities

Full Session: 12:30 - 4:30 p.m. Lunch and Learn (Training Participants Only):

12:30 - 1:15 p.m. | Room: Texas D, 4th Floor

4 hours of continuing education credits for Peers, Family Partners, and Supervisors of Peers and Family Partners will be offered for this session. Lunch will be provided for participants who registered in advance.

This interactive training begins with a special presentation by Dr. Sandra Smith, highlighting the development of Justice-Involved Peer Support Certification and the growing movement to recognize the unique role of Peers within justice-involved systems. Participants will learn about the current state and future direction of peer support within diversion, reentry, and justice settings.

Following the keynote, participants will explore the Four Pillars of Peer Support Communication: Listening, Holding Space, Validation/Reflection, and Curiosity. These foundational practices help create emotional safety, build trust, and support recovery-oriented relationships. Participants will deepen their understanding of how Peer Support differs from clinical approaches and strengthen skills that help people feel heard, respected, and empowered.

Speaker:

- Sandra Smith, PhD, RPS, Chief Program Officer, World Recovery Network
- Janet Paleo, Director of Government Relations for Recovery-Based Services, Texas Council of Community Centers
- Anna Gray, MEd, MHPS, Executive Director, Prosumers International

Learning Objectives:

- Describe the emerging role of Justice-Involved Peer Support Certification and identify opportunities for Peer Specialists within Community Center services.
- Define the Four Pillars of Peer Support Communication and explain their roles in recovery-oriented relationships.
- Identify barriers that interfere with authentic Peer connection, including judgment, assumptions, and the urge to rescue, direct, or “fix” others.
- Demonstrate active and intentional listening skills that promote trust, emotional safety, and authentic connection.
- Apply strategies for holding space, validation/reflection, and respectful curiosity to support empowerment and meaningful Peer relationships.

Texas Council of Community Centers, Inc. | Provider No. 2074-21

Provider approved by the TCB Standards Committee, Provider No. 2074-21, four (4) hours general education.

Expires 6/2026.

Complaints about provider or workshop content may be directed to the TCB Standards Committee, PO Box 342343, Lakeway, TX 78734, Fax (888) 506-8123.

Peer Content Sponsors and Partners

Lunch sponsored in part by United Healthcare Community Plan Texas.

Dr. Sandra Smith is presenting on behalf of the Opioid Response Network (ORN). The SAMHSA-funded ORN provides no-cost educational resources and training focused on opioid and stimulant use disorders. This work is community driven and delivered by local, experienced ORN Consultants embedded in and working with individuals and organizations in every state and territory. Visit OpioidResponseNetwork.org to learn more.

Thank you to the following groups for generously supporting the Texas Council Conference Peer scholarship fund!

- Executive Director/Chief Executive Officer Consortium
- Behavioral Health Consortium
- Children’s MH Consortium
- Consumer Benefits Organization
- Human Resources Consortium
- Intellectual and Developmental Disabilities (IDD) Consortium
- Information Management Consortium

POSTER SESSIONS

THURSDAY, JUNE 11, 2026 | 8:00 - 5:00 P.M.
TEXAS BALLROOM FOYER, 4TH FLOOR

BLURRED LINES: MANAGING THE WORKFORCE VIA MULTIPLE LENSES

The global pandemic has yielded unprecedented challenges for everyone. The historical stigma associated with mental health has gradually evolved with employees feeling comfortable to discuss and disclose their mental health. Given this paradigm shift leaders within the mental health sector have inherited the task of managing the workforce via multiple lenses. This poster will provide information and insight regarding how leaders navigate the roles of clinician and supervisor.

» Creslyn Davis, ABD, MBA, HRPM, CDP, Chief HR Officer, Spindletop Center

BRUSHSTROKES OF HEALING: LEVERAGING ART AND HISTORY TO ENGAGE VETERANS' MENTAL HEALTH CARE

The Emergence Health Network (EHN) Veterans One Stop Center partnered with the Tom Lea Institute to present "Brushstrokes from the Frontlines of WWII," a traveling exhibit showcasing Tom Lea's wartime artwork that has long been used to support trauma processing among Veterans. Because stigma and distrust often limit engagement in formal services, EHN leveraged art and history to create a trauma-informed, low-barrier environment that encourages Veterans and families to openly discuss post-traumatic stress disorder (PTSD), moral injury, and lived experience. This poster outlines how the event was structured, how clinical perspectives shaped the approach, and how the exhibit served as a gateway for rapport and service connection. Participants will take away practical strategies for replicating veterans-centered engagement events in their own communities.

» Jonathan Bohannon, LPC-A, Director of Military and Veteran Services, Emergence Health Network

DON'T IGNORE THE FLASHING RED LIGHTS: USING DATA TO DRIVE SAFETY PLAN COMPLIANCE

The risk indicators within the standard mental health assessment tools utilized within Community Mental Health Centers provide easily accessible insight into an individual's risk profile. While crisis intervention policies may be clearly defined, organizations must be able to track compliance with these policies to mitigate risk both to clients and the organization. This poster will demonstrate how to leverage data-driven approaches to ensure timely and effective safety planning when clinically indicated by these "flashing red lights".

» Andrew Ahles, LMFT-S, Director of Clinical Training, Metrocare Services

POSTER SESSIONS

THURSDAY, JUNE 11, 2026 | 8:00 - 5:00 P.M.
TEXAS BALLROOM FOYER, 4TH FLOOR

EVERYONE HAS A ROLE: BUILDING COLLABORATION AND TRUST IN OVERDOSE PREVENTION

The First Responders-Comprehensive Addiction and Recovery Act (FR-CARA) initiative at Emergence Health Network (EHN) began with a focus on training first responders to carry and administer Naloxone. Over time, the EHN team learned that overdose prevention often starts before 911 is called. Teachers, childcare providers, neighbors, and local business staff are frequently the first to recognize warning signs or respond in critical moments. By approaching partnerships with the mindset of, "How can we help you?", and building genuine relationships with both community members and law enforcement, the program expanded its reach and deepened trust from participants. This poster explores how recognizing that everyone has a role, from professional responders to everyday community allies, can strengthen prevention, collaboration, and collective responsibility.

- » EdRicardo Gandara, Community Educator, Emergence Health Network
- » Ariel Mess, MSc.Psy, QMHP-CS, CARA Project Coordinator, Emergence Health Network

EXPANDING ACCESS: A COLLABORATIVE GRANT FUNDING FRAMEWORK

Individuals with intellectual and developmental disabilities (IDD) often face significant unmet needs that fall outside Medicaid or home and community-based services (HCBS) coverage. Integral Care's IDD Division created a collaborative framework for identifying needs, securing grants, and distributing funds efficiently to promote stability and community inclusion. This poster highlights the model Integral Care developed, including program operations and grant personnel align efforts, implement simple referral and approval processes, and track crisis stabilization outcomes. This poster shares a practical, scalable strategy that Centers of any size can mirror, even without a dedicated grant writer. Participants will take away concrete steps for building internal or external partnerships that expand access for individuals with IDD.

- » Jesus Gutierrez, Practice Manager, Integral Care

FIVE LEADERSHIP PRINCIPLES IN IMPLEMENTING A NEW PROGRAM

Implementing a new program can be a daunting venture, but there are guiding leadership principles that can help make implementation a success. In 2023, The Center for Health Care Services started a new program called Community Awareness in Adolescents and Teens (CHAAT). By the end of FY24, the Center received \$1.2 million from HHS Smart Grant. Over that year, the CHAAT program saw big successes and faced even bigger challenges. The Center tackled the challenges using five leadership principles: vision casting, being creative, using the law of the audacious attitude, being resilient, and using community teamwork. This poster will share how to use these five leadership principles to implement a new program, even when the challenges are great.

- » Nickolas Raczek, MA, LPC, Clinic Administrator, The Center For Health Care Services

POSTER SESSIONS

THURSDAY, JUNE 11, 2026 | 8:00 - 5:00 P.M.
TEXAS BALLROOM FOYER, 4TH FLOOR

MENTAL HEALTH STIGMA IN THE LATINO COMMUNITY

This workshop will address the pervasive issue of mental health stigma within the Latino community, with a special focus on border communities. By exploring cultural nuances, historical context, and personal experiences, participants will gain a deeper understanding of the barriers to mental health care. The session will highlight strategies for reducing stigma and promoting mental health awareness, tailored to the unique needs of Latino individuals and families in this diverse and bilingual region.

- » Maricela Giner-Nevarez, MS, LPC-S, Director of Clinical Services, Emergence Health Network

OCCUPATIONAL THERAPY IN CHILD AND ADOLESCENT BEHAVIORAL HEALTH: LESSONS FROM THE HEART OF TEXAS

Occupational therapy (OT) has historically been limited in Texas behavioral health settings, with most services concentrated on early childhood intervention. However, children and adolescents with mental and behavioral health needs can benefit from OT through sensory regulation, functional skill development, routines, and improved participation at home, school, and in the community. This presentation highlights the role of OT within the behavioral health workforce and describes how the Heart of Texas Behavioral Health Network integrated OT into its continuum of care. Lessons learned, barriers, and sustainability strategies will be shared to support implementation in other Local Mental Health Authorities.

- » Veronica Guardiola, OTD, OTR/L, Occupational Therapist, Heart of Texas Behavioral Health Network

CONCURRENT SESSIONS

WEDNESDAY, JUNE 10, 2026 | 3:30 - 5:00 P.M.

ADDICTION 2026: NEW SUBSTANCES, NEW TREATMENTS

Texas D, 4th Floor

Available Credits: LPC/LMFT/SW, CPE for Accountants, CME, NCPD, LCDC

Texas has been affected by the U.S. opioid crisis, but opioids are not the only drugs of concern in the state. This session will focus on a few emerging drugs of concern: kratom, synthetic cannabinoids (Spice, Kush, Fake Weed), and high potency synthetic opioids like fentanyl, as well as adulterants like xylazine (Tranq). Participants will learn about evidence-based methods to engage clients using motivational interviewing techniques and ways to address safety planning. Newer treatments for addiction will be presented, including mindfulness techniques, the need for higher-dose naloxone and medications for opioid use disorder, and a potential role for GLP-1 receptor agonists.

- Michael Weaver, MD, Professor and Medical Director, McGovern Medical School at UT Health Science Center Houston

Learning Objectives:

- » Identify emerging psychoactive substances, including kratom, synthetic cannabinoids, and others.
- » Discuss evidence-based methods to engage patients with substance use to help mitigate risks of use.
- » Describe emerging treatment options for substance use disorders.



Dr. Michael Weaver is presenting on behalf of the Opioid Response Network (ORN). The SAMHSA-funded ORN provides no-cost educational resources and training focused on opioid and stimulant use disorders. This work is community driven and delivered by local, experienced ORN Consultants embedded in and working with individuals and organizations in every state and territory. Visit OpioidResponseNetwork.org to learn more.

ARTIFICIAL INTELLIGENCE: A COHORT REVIEW OF THE CURRENT AI LANDSCAPE FOR CCBHCS

Seguin, 4th Floor

Available Credits: LPC/LMFT/SW, CPE for Accountants

Certified Clinical Behavioral Health Center (CCBHC) management is regularly hounded by AI developers promising to improve staff productivity, satisfaction, and morale, while improving patient outcomes and providing a financial return on investment, but do they deliver on those promises? Five CCBHC cohort members, funded by a grant from Episcopal Health Foundation, reviewed the current landscape of artificial or augmented intelligence applications and adoption by CCBHCs. Cohort members who implemented AI applications will offer insight into their implementations, lessons learned, and tips and traps for considering the use of an AI application within a CCBHC. Legal and regulatory considerations will also be discussed in brief.

- Holly Borel, MBA, Chief Executive Officer, Spindletop Center
- Carin Shuford, Manager of Health Information Systems, Texana Center

Learning Objectives:

- » Name three AI applications marketed to CCBHCs and their primary purpose.
- » Discuss two key factors to consider when contracting with an AI vendor.
- » Identify one legal/regulatory consideration related to AI adoption.

CONCURRENT SESSIONS

WEDNESDAY, JUNE 10, 2026 | 3:30 - 5:00 P.M.

BRINGING CARE HOME: A PILOT PROGRAM INTEGRATING PSYCHIATRY AND NURSING CARE

Lone Star B, 2nd Floor

Available Credits: LPC/LMFT/SW, CPE for Accountants, CME, NCPD, LP

The Center for Health Care Services implemented a pilot program for joint home visits by a psychiatric provider and field nurse for clients with severe mental illness, chronic health conditions who often face barriers accessing clinic-based care. Evidence shows that home visits improve symptom management, client satisfaction, and reduce emergency care utilization. This session will discuss the Center's experience implementing the pilot, as well as data collected on client satisfaction, provider and nurse experience, and hospitalization and ER use over a six-month period. Participants will take away considerations and strategies for similar interdisciplinary programs at their own organizations.

- Marina Vladimir, PhD, MHA, LPC, Clinical Administrator, The Center for Health Care Services
- Martine Jerome, LCSW, Clinical Director, The Center for Health Care Services
- Joshua Atkinson, MD, MBA, Medical Director, The Center for Health Care Services
- Valerie Sanchez, RN, Registered Nurse, The Center for Health Care Services

Learning Objectives:

- » Summarize the rationale and evidence for the benefits of providing home-based care for individuals with severe mental illness and chronic health conditions.
- » Identify key components of successful joint psychiatric provider-nurse visits.
- » Apply at least two strategies to develop or improve interdisciplinary workflows and clinical outcomes within their own practice.

FROM BARRIERS TO BRIDGES: EXPANDING CAREER PATHWAYS THROUGH PEER-TO-CAREER

Crockett AB, 4th Floor

Available Credits: LPC/LMFT/SW, CPE for Accountants, MHPS/RSPS/PSS/CFP

The Peer-to-Career Program at RecoveryPeople helps Texans overcome barriers that prevent peers from entering and advancing in the workforce. Limited funding, background checks, certification fees, and access to supervision or continuing education credits often block progress. This session shows how Peer-to-Career closes these gaps through financial support, mentorship, rural access strategies, and strong partnerships. Participants will explore how statewide networks share successes and challenges, then engage in an activity to identify their own barriers and map practical solutions for career or organizational growth.

- Jermaine Hines, MHPS, RSPS, Marketing and Community Coordinator, RecoveryPeople
- Christine Zimmerly, MHPS, RSPS, PRS IC&RC, PSS, JI-RPS, Peer to Career Director, RecoveryPeople

Learning Objectives:

- » Identify common barriers to peer certification, supervision, and employment, and explore how targeted interventions can increase equitable access statewide.
- » Explain how data collection and continuous feedback mechanisms inform Peer-to-Career's approach to workforce development and problem-solving.
- » Apply strategies to build collaborative networks among peer specialists, supervisors, and employers that strengthen retention and career advancement.

CONCURRENT SESSIONS

WEDNESDAY, JUNE 10, 2026 | 3:30 - 5:00 P.M.

MAKING IT MATTER: BUILDING COMMUNITY THROUGH MEDIA

Republic BC, 4th Floor

Available Credits: LPC/LMFT/SW, CPE for Accountants

Community Centers often face challenges connecting communications with direct care staff, missing opportunities to share genuine, community-focused stories. This presentation offers strategies to foster interdepartmental collaboration, reduce on-camera anxiety, and create approachable, meaningful, and accurate mental health content. Participants will learn to identify the differences between promotional and performative messaging, implement social trends meaningfully, and amplify real stories from within their agencies. Participants will take away actionable tools to strengthen internal partnerships, aligning storytelling to fiscal and organizational outcomes, and build lasting community trust through thoughtful communication.

- Laura Mattingly, Digital Communications Coordinator, Emergence Health Network

Learning Objectives:

- Identify your point of contact for newsworthy accomplishments in your program.
- Develop actionable strategies to take ownership of their department's accomplishments by strengthening internal partnerships and aligning organizational storytelling to fiscal outcomes.
- Identify the difference between promotional and performative content, in order to preserve brand consistency while balancing awareness with cultural relevancy.

MODERNIZING IDD SERVICES: A DATA-DRIVEN MODEL FOR TOMORROW'S LOCAL IDD AUTHORITIES

Lone Star A, 2nd Floor

Available Credits: LPC/LMFT/SW, CPE for Accountants

Texas IDD Services have long faced complexity, limited data, and inconsistent workflows across Local IDD Authorities. Gulf Coast Center implemented three interconnected solutions to close these gaps: Eleos for automated progress notes within SmartCare EHR, iCentrix dashboards for real-time billing and performance insight, and a scalable operating system that simplifies workflows and HHSC-driven changes. Together, these innovations have led to major increases in service-provision rates, faster onboarding, and measurable gains in compliance accuracy. Participants will leave with a clear roadmap for integrating data and tools into IDD operations without sacrificing person-centered care, along with realistic cost considerations and an implementation sequence any Local IDD Authority could follow within two years.

- Felicia Jeffery, MA, LPC, Chief Executive Officer, Gulf Coast Center
- Deanna David, QIDP, Director of IDD Services, Gulf Coast Center
- Brooke Camarata, MA, Supervisor of IDD Authority Services, Gulf Coast Center

Learning Objectives:

- » Define common structural and technological barriers that limit IDD system efficiency statewide.
- » Explain how AI-supported documentation and real-time data dashboards improve compliance, billing accuracy, and staff capacity.
- » Develop an actionable plan to implement a scalable, data-driven framework in their own Local IDD Authority within two years.

CONCURRENT SESSIONS

WEDNESDAY, JUNE 10, 2026 | 3:30 - 5:00 P.M.

RESPONDING TO SELF-HARM FOR HIGH NEEDS POPULATIONS

Crockett CD, 4th Floor

Available Credits: LPC/LMFT/SW, CPE for Accountants

The Southwest ISD C.A.R.E.S. Mental Health Center provides support for students via no-cost counseling, assessments, crisis support, and education to reduce barriers and support access to mental health services. To combat rising rates of self-harm among youth and adolescents, it is important to increase awareness of high-risk factors, warning signs, and appropriate responses. This presentation will share practical strategies, crisis resources, and tools to strengthen school-based support for students. Interactive questions will help participants reflect on their own practices and apply learning to their Centers.

- Priscilla Vomero, MEd, LPC, Mental Health Therapist, SW CARES Center

Learning Objectives:

- » List high-risk factors for self-harm among children and teens.
- » Apply best practices for responding to self-harm with families and school personnel.
- » Identify response techniques and tools to decrease repeated self harm behavior.

TRANSITIONAL RENT AND INTENSIVE SERVICES: A COMMUNITY STABILIZATION APPROACH

Lone Star C, 2nd Floor

Available Credits: LPC/LMFT/SW, CPE for Accountants

For over 20 years, Metrocare, alongside the Dallas provider network, have been addressing Dallas' housing insecurity by pairing high-intensity services with rental assistance used to fund temporary housing placements. This pairing of intensive programming with a placement in transitional housing is often arranged at the time of discharge following an inpatient stay. Additionally, individuals new to an intensive program and experiencing a housing need are also connected to transitional housing. Through the utilization of transitional rental assistance, previously unhoused individuals do not have to return to homelessness post-hospitalization or crisis. This presentation will share Metrocare's experience and outcomes in pairing housing with a high level of care.

- Jennifer Torres, MSW, Director of Intensive Services, Metrocare
- Cari Davis, MA, LPC-S, Program Manager of ACT, OCR, and AOT, Metrocare

Learning Objectives:

- » Define the population and levels of care that can benefit from the approach of pairing high-intensity services with transitional rental assistance.
- » Identify strategies for linking unhoused individuals to transitional housing.
- » Assess the housing options in a local area and practical steps for using the participant's community's existing housing resources.

TRUSTEE ROLES AND RESPONSIBILITIES

Republic A, 4th Floor

Available Credits: LPC/LMFT/SW, CPE for Accountants, CLE

This session will generally discuss the legal role that a Board of Trustees plays in the Texas Community Center system and the statutory responsibilities of Trustees as set out in Chapter 534 of the Texas Health and Safety Code. Time will be allotted for a Q&A session to cover practical issues of Board operations and Community Center governance.

- Pamela Beach, JD, MBA, BSN, General Counsel, Texas Council Risk Management Fund

Learning Objectives:

- » Define the legal role trustees play within the Texas Community Center system.
- » Identify the statutory responsibilities of trustees as set out in Chapter 534 of the Texas Health and Safety Code.
- » Explain how the requirements of the Texas Public Information Act and Open Meetings Act apply to Community Centers and trustees.

CONCURRENT SESSIONS

THURSDAY, JUNE 11, 2026 | 10:30 A.M. - 12:00 P.M.

AUTISM IN CRIMINAL JUSTICE SETTINGS

Texas D, 4th Floor

Available Credits: LPC/LMFT/SW, CPE for Accountants, CLE

When individuals with autism spectrum disorder (ASD) interact with the criminal justice system, serious conflicts can arise from miscommunication and lack of understanding of the individual's specific needs. In this presentation, Anne Jackson, a career prosecutor, and her son Tres Jackson, diagnosed with ASD when he was 11, share their family's experiences interacting with law enforcement, educators, doctors, and other service professionals. Anne adds stories from her career spent prosecuting family violence and crimes against children and Trey talks openly about his life on the autism spectrum. The presentation aims to create understanding throughout the criminal justice system about autism spectrum disorder.

- Anne Jackson, JD, Assistant County Attorney, Bell County Attorney's Office
- Tres Jackson, Registered Behavioral Technician, Central Texas Behavioral Solutions

Learning Objectives:

- » List common behavioral characteristics of autism in children and adults.
- » Identify unique behavioral challenges with special attention to both juveniles and adults in crises who are being questioned, detained, arrested, investigated, and placed in custody.
- » Utilize real world examples to demonstrate how autism relates to responsibility and criminality.

BEYOND A SEAT AT THE TABLE: MEANINGFUL ENGAGEMENT IN PLANNING AND NETWORK ADVISORY COMMITTEES (PNACS)

Seguin, 4th Floor

Available Credits: LPC/LMFT/SW, CPE for Accountants, MHPS/RSPS/PSS/CFP

As Certified Community Behavioral Health Clinics (CCBHCs), many Centers are seeking to move beyond basic compliance with Planning and Network Advisory Committee (PNAC) minimum requirements to fostering meaningful engagement and genuine partnership with people receiving services. This session will explore practical, recovery-oriented strategies for finding and inviting participants, creating welcoming and emotionally safe committee environments, and cultivating authentic participation where people with lived experience feel valued, empowered, and encouraged to contribute. Participants will leave with practical ideas to strengthen engagement, increase participation, and support meaningful input and collaboration.

- Deanna Pape, MA, Director of Mental Health Services, Camino Real Community Services
- Tami Delmark, CPSS, Peer Services Program Manager, Gulf Coast Center
- Janet Paleo, Director of Government Relations for Recovery-Based Services, Texas Council of Community Centers
- Anna Gray, MEd, MHPS, Executive Director, Prosumers International

Learning Objectives:

- » Identify barriers to recruiting and engaging people receiving services on PNACs and advisory committees.
- » Describe practical strategies for identifying and recruiting individuals with lived experience for committee participation.
- » Differentiate between token participation and authentic engagement of people with lived experience.
- » Apply approaches that create welcoming, recovery-oriented environments that encourage participation, trust, and meaningful input.

CONCURRENT SESSIONS

THURSDAY, JUNE 11, 2026 | 10:30 A.M. - 12:00 P.M.

BUILDING THE FIRST MULTIDISCIPLINARY PEER SUPPORT TEAM AFTER THE KERRVILLE FLOOD

Lone Star B, 2nd Floor

Available Credits: LPC/LMFT/SW, CPE for Accountants

NOTE: In the context of this session, the word “peer” is used generally to refer to a colleague or person of similar professional experience, rather than a Certified Peer Support professional.

The Center for Health Care Services Multidisciplinary Response Teams forged strong interagency partnerships to launch the state’s first Multidisciplinary Peer Support Team, dedicated to first responders engaged in rescue, recovery, and mitigation efforts during the Kerr County Flood in Kerrville, Texas. This innovative deployment bridged crisis response principles with disaster operations, offering a compassionate, integrated support system for the frontline workers. Learn about foundational practices, logistical and operational challenges, and the firsthand experiences of the peer support team and first responders. Hear feedback from those who directly benefited from the team’s presence will also share the impact of having dedicated, trauma-informed first responder peer support available throughout the emergency.

- Andrew Estrada, BAAS, MPA, Vice President of Crisis Response Services, Center for Health Care Services
- Janet Garcia, MSW, BSW, LCSW-S, Clinic Administrator, Crisis Response Services, Center for Health Care Services
- Kellie Burnam, EMT-LP, Division Director, Peer Support Network, Texas Division of Emergency Management
- Walter Ball, Licensed Paramedic, Assistant Fire Chief, Boerne Fire Department

Learning Objectives:

- » Identify ways Local Mental Health Authorities (LMHAs) can build upon existing collaborative efforts with community partners.
- » Propose new collaborative efforts to establish between multidisciplinary partners.
- » Explain the LMHA role within a Multi-Disciplinary First Responder Peer Support team.

CULTURE BY DESIGN: HOW GULF COAST CENTER BROUGHT JUST-IN-TIME RAPID ACCESS PSYCHIATRY SCHEDULING TO LIFE

Lone Star A, 2nd Floor

Available Credits: LPC/LMFT/SW, CPE for Accountants, CME, NCPD, LP

Delays in psychiatric access remain a major barrier to timely, person-centered care. Gulf Coast Center addressed this by building upon their successful Same-Day/Next-Day Mental Health Evaluation process to introduce the Just-in-Time (JIT) Psychiatry Scheduling approach, blending rapid access, real-time scheduling flexibility, and walk-in capacity to strengthen engagement, safety, and continuity. Comprehensive self-review engaging applicable staff throughout, Gulf Coast Center purposefully co-designed an evidence-aligned adaptation that fit local context, learning that JIT success depends as much on organizational culture as on the JIT model. This panel shows how Centers can improve access through culturally aligned, strategically adapted systems to enhance engagement, stability, and outcomes.

- M. Renee Valdez, MD, PhD, MS, Chief Medical Officer, Gulf Coast Center
- Felicia Jeffery, MA, LPC, Chief Executive Officer, Gulf Coast Center
- Jessica Gentry, MA, LPC-S, Senior Director of Clinical Services, Gulf Coast Center

Learning Objectives:

- » Define the core components of Just-in-Time (JIT) Psychiatry Scheduling (i.e. Rapid Access Scheduling) and their functions in safety net mental health settings.
- » Compare how Rapid Access strategies (including rapid access scheduling, real-time scheduling flexibility, and walk-in capacity) influence no-show rates and care continuity.
- » Apply methods for aligning JIT psychiatry workflows with organizational systems (including staffing, communication structures, and Mission, Vision, and Values).

CONCURRENT SESSIONS

THURSDAY, JUNE 11, 2026 | 10:30 A.M. - 12:00 P.M.

FINANCIAL INNOVATION FOR LOCAL IDD AUTHORITIES IN A COST-CONSCIOUS ERA

Crockett AB, 4th Floor

Available Credits: LPC/LMFT/SW, CPE for Accountants

This presentation offers a strategic review of revenue generation, structural changes, and operational improvements within a Local IDD Authority for the present climate. Key focus areas include organizational restructuring and the implementation of initiatives to maximize funding through enhanced billing practices and collaboration with the finance department. Speakers will also highlight operational enhancements, such as mentorship programs, administrative layering, and data-driven development, including efforts to strengthen encounter data and explore the utilization of current funding streams. Participants will gain insight into the challenges, lessons learned, and forward-looking strategies that continue to shape the Local IDD Authority's financial and operational landscape.

- Rene Alexander, MBA, CHFP, Director of Business Operations, Metrocare
- Carolina Lasso, QIDP, Chief Authority Officer, Metrocare

Learning Objectives:

- » Analyze revenue trends and structural shifts within a Local IDD Authority from 2018 to present, including the rationale behind proposed organizational changes.
- » Evaluate the effectiveness of strategic initiatives aimed at improving billing accuracy, budgeting practices, and collaboration with revenue cycle management.
- » Identify key operational improvements and data strategies that support sustainable funding, including enhancements to encounter data and exploration of new funding opportunities.

FROM SILOS TO SYNERGY: ADVANCING PATIENT-CENTERED SYSTEMS OF CARE

Lone Star C, 2nd Floor

Available Credits: LPC/LMFT/SW, CPE for Accountants

Transition and Teaming training has been instrumental in guiding MHMR of Tarrant County through periods of growth, funding shifts, and organizational change. By fostering collaborative teamwork, the Center has transformed lives through comprehensive, whole-person care with a no-wrong door approach to delivering services. Staff have been empowered with practical tools and strategies through collaborative training, enabling them to support individuals regardless of cognitive, communication, or functional abilities. Join this presentation to explore how collaborative training and teaming can help your organization adopt a person-centered approach, rather than a diagnosis-driven model.

- Laura Golden, OTR, OTD, System Director Transition and Teaming, MHMR of Tarrant County
- Elizabeth Stasey, LPC-S, LCDC, System Director-Provide Training and Support, MHMR of Tarrant County
- Martha Sanderford-Smith, DNP, RN, Healthcare System of Care Administrator, MHMR of Tarrant County

Learning Objectives:

- » Explain how interdisciplinary collaboration enhances service delivery and promotes holistic care.
- » Apply person-centered tools and techniques to prioritize individual needs over diagnostic labels, ensuring individualized support.
- » Engage with individuals of varying cognitive, communication, and functional abilities through adaptable approaches.

CONCURRENT SESSIONS

THURSDAY, JUNE 11, 2026 | 10:30 A.M. - 12:00 P.M.

THE CRYSTAL CLEAR STORY, SCIENCE, AND IMPACT OF METH

Crockett CD, 4th Floor

Available Credits: LPC/LMFT/SW, CPE for Accountants, CME, LCDC

Methamphetamine is one of the most potent and destructive substances affecting communities worldwide. This presentation explores the full spectrum of methamphetamine's story, from its chemical origins and pharmacology to its profound social, psychological, and economic consequences.

- Hildebrando Mireles III, PhD Candidate, LPC-S, Chief Clinical Officer, Camino Real Community Services

Learning Objectives:

- » Summarize the origins of methamphetamine, its early uses, and how its role evolved over time in medicine and illicit markets.
- » Describe the key chemical components of methamphetamine and how they interact with the central nervous system to produce stimulant effects.
- » Assess the short-term and long-term physiological and psychological effects of methamphetamine use, including addiction, organ damage, and mental health consequences.
- » Evaluate evidence based intervention and treatment approaches for methamphetamine and other stimulant use disorders, including considerations for co occurring substance use.

THERAPEUTIC DISCORD

Republic A, 4th Floor

Available Credits: LPC/LMFT/SW, CPE for Accountants, CME, NCPD

This presentation will explore common scenarios of conflict and discord between members of the treatment team and patients. Participants will learn therapeutic and non-therapeutic responses to discord. These approaches will be practiced in small groups through roleplay. To facilitate the interactive learning format, this session will be limited to 30-40 participants (first-come, first-serve). This session is geared toward care providers who work directly with clients in their regular practice, such as therapists and medical staff. Come early to reserve your spot!

- Joshua Cabrera, MD, Medical Director, MHMR Authority of Brazos Valley

Learning Objectives:

- » Identify common scenarios that generate discord between a clinical service provider and a patient.
- » Practice alliance-enhancing and alliance-impairing responses to discord.
- » Incorporate experiences of discord into case formulation and treatment planning.

TRANSITIONING FROM A CO-WORKER TO SUPERVISOR

Republic BC, 4th Floor

Available Credits: LPC/LMFT/SW, CPE for Accountants

Transitioning a work role from co-worker to supervisor within a Community Center can be challenging, due to changes in relationships, responsibilities, and expectations. This session will equip new supervisors with tools to navigate these changes effectively, while maintaining trust and fostering team growth.

- Daniel Hernandez, PHR, SHRM-CP, Risk Services Training Manager, Texas Council Risk Management Fund

Learning Objectives:

- » Summarize how professional relationships and boundaries shift when moving from co-worker to supervisor.
- » List strategies for leading with integrity and fairness while avoiding favoritism.
- » Identify and address common transitional issues, such as resistance, role confusion, and performance management.

CONCURRENT SESSIONS

THURSDAY, JUNE 11, 2026 | 1:30 P.M. - 3:00 P.M.

BRIDGING GAPS: ADVANCING COMMUNITY SERVICES USING THE SEQUENTIAL INTERCEPT MODEL

Republic BC, 4th Floor

Available Credits: LPC/LMFT/SW, CPE for Accountants

This presentation will highlight practical strategies for implementing new behavioral health and diversion services using the Sequential Intercept Model (SIM). Participants will learn how to identify gaps, align services with the five intercepts, and build strong relationships with key community partners, including law enforcement, courts, crisis teams, treatment providers, and reentry supports. Find out how coordinated cross-system collaboration improves service delivery, strengthens continuity of care, and enhances outcomes for individuals with behavioral health needs.

- Keisha Morris, LCDC, Chief SIM Officer, Andrews Center

Learning Objectives:

- » Identify service gaps and align new programs with the five SIM intercepts.
- » Strengthen collaboration with key community partners across intercepts.
- » Apply SIM strategies to improve coordination and service delivery.

EFFICIENCY MEETS EMPATHY: IMPROVING OUTCOMES THROUGH TREATMENT AND SUPPORT

Lone Star C, 2nd Floor

Available Credits: LPC/LMFT/SW, CPE for Accountants, LP

Forensic State Hospital Waitlists continue to grow, resulting in extended periods of incarceration for people in need of inpatient competency restoration and psychiatric care. These delays can contribute to decompensation, behavioral instability, and increased safety concerns within correctional settings. The Forensic Single Portal Authority (FSPA) program addresses this problem by early intervention: initiating appropriate psychiatric medications, stabilizing symptoms, and facilitating continuity of care. By providing timely assessment and treatment, FSPA can reduce the need for hospitalization, shorten wait times for those who do require admission, and ensure individuals are safely connected to community-based services upon release using a multidisciplinary treatment team approach.

- Krystin Holmes, PhD, LPC-S, LMFT-S, NCC, Director, Court Services, The Harris Center for Mental Health and IDD
- Melissa Gillis-Reid, LPC, Clinical Team Lead - FSPA, The Harris Center for Mental Health and IDD

Learning Objectives:

- » Describe the process of developing an early-intervention forensic program.
- » Discuss the necessary components and stakeholders required for establishing an early-intervention forensic program.
- » Analyze outcomes associated with the implementation of an early-intervention forensic program.

CONCURRENT SESSIONS

THURSDAY, JUNE 11, 2026 | 1:30 P.M. - 3:00 P.M..

FROM TOXIC TO TRUSTWORTHY: CULTIVATING PSYCHOLOGICALLY SAFE WORKPLACES

Crockett AB, 4th Floor

Available Credits: LPC/LMFT/SW, CPE for Accountants

Psychological safety is a cornerstone of thriving, high-performing workplace cultures. This session empowers participants with actionable, evidence-based tools to assess and strengthen the presence of psychological safety within their organizations. Through opportunities for guided reflection, interactive activities, and a review of key research findings, participants will learn to identify common barriers to psychological safety and implement strategies that foster trust and open communication. Leave this session equipped to create environments where individuals feel safe to speak up, take risks, and contribute to team success!

- Jodi Olson, MEd, Leadership Program Instructor, The Harris Center for Mental Health and IDD

Learning Objectives:

- » Implement practical assessment activities to evaluate psychological safety within workplace teams and organizational environments.
- » Apply evidence-based tools and practices to foster and sustain psychological safety in diverse workplace settings.

INSIGHT INTO THE TEXAS POLITICAL LANDSCAPE

Texas D, 4th Floor

Available Credits: LPC/LMFT/SW, CPE for Accountants, CLE, LCDC, MHPS/RSPS/PSS/CFP

Leaders of two of the most notable political publications in Texas, The Quorum Report and the Texas Tribune, will share their views on the current and future political landscape in our state. If you want to know what's really happening and what's ahead in Texas politics, don't miss the chance to hear and interact with these experts!

- Carl Isett, Consultant, Former State Representative, District 84
- Harvey Kronberg, Publisher, Quorum Report
- Ross Ramsey, Consultant, Co-Founder of Texas Tribune
- Moderator: Lee Johnson, MPA, Chief Executive Officer, Texas Council of Community Centers

Learning Objectives:

- » Identify current trends in Texas politics impacting special populations, the Community Center system, and the delivery of healthcare.

CONCURRENT SESSIONS

THURSDAY, JUNE 11, 2026 | 1:30 P.M. - 3:00 P.M.

RELATIONAL LEADERSHIP: TRAUMA-WISE PRINCIPLES AND COACHING FOR STAFF ENGAGEMENT

Seguin, 4th Floor

Available Credits: LPC/LMFT/SW, CPE for Accountants, LCDC

Leadership is a relational venture and employees seek a coach, not a boss. This presentation details the journey of MHMR of Tarrant County to integrate Dr. Howard Bath's three pillars of trauma-wise care: Felt Safety, Connection, and Emotional Regulation. Participants will learn to adopt a strengths-based, engagement-focused, performance-oriented coaching model. Managers, who account for 70% of variance in engagement, will use Gallup's framework, including coaching conversations, to establish clear expectations, leverage unique strengths, and meet employee needs. This approach creates the relationships that are essential for growth, driving high performance, engagement, and retention.

- Bill Hill, MBA, Strategic Initiatives Liaison, MHMR of Tarrant County
- Leah Gilliam, MSW, LCSW, Senior Director of Trauma Wise Practices, MHMR of Tarrant County
- Scott Watters, MS, LPC, Trauma Wise Consultant, MHMR of Tarrant County

Learning Objectives:

- Explain the role of manager-as-coach in fulfilling employees' fundamental needs for connections and safety.
- Translate Dr. Bath's three pillars of trauma-wise care (Felt Safety, Connection, Emotional Regulation) into concrete workplace management practices.
- Implement a coaching framework as a mechanism for providing the regular, meaningful, and individualized support employees need.

THE CLINIC COMES TO YOU: REMOVING BARRIERS WITH MOBILE BEHAVIORAL HEALTH

Lone Star B, 2nd Floor

Available Credits: LPC/LMFT/SW, CPE for Accountants, CME, NCPD

Unhoused individuals often face barriers accessing traditional clinics, resulting in treatment gaps. Integral Care addresses this with a Mobile Behavioral Health Clinic, bringing a multidisciplinary team, including a Registered Nurse and Psychiatric Mental Health Practitioner, directly to community sites. This model provides immediate screening and connects clients to ongoing care. This session explores how meeting clients "where they are" improves engagement. Participants will analyze this operational framework to adapt similar strategies at their Centers and identify specific barriers in their own communities that mobile services could mitigate.

- Ryan McDaniel, LPC-S, Practice Administrator, Integral Care
- Dawn McKenna, PMHNP, Psychiatric Mental Health Nurse Practitioner, Integral Care
- Chris Esparza, QMHP, Team Lead, Integral Care
- Roman Icaro, RN, Registered Nurse, Integral Care

Learning Objectives:

- » Identify three specific barriers to traditional mental health access that mobile service delivery models successfully mitigate for unhoused populations.
- » Describe the roles and collaborative workflow of a multidisciplinary mobile team required to safely administer psychiatric care in non-traditional community settings.

CONCURRENT SESSIONS

THURSDAY, JUNE 11, 2026 | 1:30 P.M. - 3:00 P.M.

THE ECHO OF PAIN: HOW WE CARRY WHAT WE HEAR

Lone Star A, 2nd Floor

Available Credits: LPC/LMFT/SW, CPE for Accountants, LCDC

Care providers often carry the emotional weight of those they serve, leading to vicarious trauma that can erode empathy, clarity, and connection. This interactive training explores the signs, neurobiology, and impact of vicarious trauma while offering practical, evidence-based strategies to promote resilience and recovery. Through guided reflection and hands-on activities, participants will learn to recognize their own stress responses, set healthy boundaries, and develop daily practices to sustain well-being and compassionate presence in their work.

- Jessica Siegfried, LPC, LMFT, Behavioral Health Partnership Program Liaison, Betty Hardwick Center
- Rocio Bickei, MA, LPC, Behavioral Health Partnership Program Liaison, Emergence Health Network
- Brandalyn Haggerty, MS, LPC, Behavioral Health Partnership Program Liaison, The Center for Health Care Services
- Stephanie Duer, EdD, LPC-S, Behavioral Health Partnership Program Liaison, Tri-County Behavioral Healthcare
- David Baker, LPC-S, Behavioral Health Partnership Program Liaison, Heart of Texas Behavioral Health Network

Learning Objectives:

- » Identify the signs and symptoms of vicarious trauma and differentiate it from burnout and compassion fatigue.
- » Describe how repeated exposure to others' trauma affects the brain, body, and emotional regulation systems.
- » Implement individualized and team-based strategies to prevent, reduce, and recover from vicarious trauma.

WHAT IF CRISIS CARE DIDN'T START IN AN EMERGENCY ROOM OR A JAIL?

Crockett CD, 4th Floor

Available Credits: LPC/LMFT/SW, CPE for Accountants

Texas communities struggle with repeat emergency room (ER) use, jail involvement, and homelessness among individuals with unmet behavioral health needs. North Texas Behavioral Health Authority's Living Room model offers a "No Wrong Door" alternative that diverts people from ERs and custody, while supporting jail release through Critical Time Intervention and peer-led engagement. Through partnerships with first responders, courts, jails, and hospitals, the model quickly stabilizes individuals and connects them to care, housing, and benefits. Participants will gain practical diversion and re-entry tools and take part in a brief activity mapping gaps in their own crisis systems.

- Jessica Martinez, MA, LPC-S, Chief of Clinical Development, North Texas Behavioral Health Authority
- Chad Anderson, MA, LPC-S, Chief of Intensive and Forensic Services, North Texas Behavioral Health Authority
- Joe Powell, LCDC, President and Chief Executive Officer, Association of Persons Affected by Addiction

Learning Objectives:

- » Describe how the Living Room model diverts individuals from ERs and jails through integrated crisis response pathways and coordinated partnerships with first responders, courts, jails, and hospitals.
- » Explain how Critical Time Intervention (CTI) and peer-led engagement support stabilization, continuity of care, and successful reentry for individuals transitioning from jail, hospitals, or crisis settings.
- » Identify operational workflows, diversion strategies, and engagement tools that participants can apply within their own Centers to strengthen crisis response and reentry coordination.

CONCURRENT SESSIONS

THURSDAY, JUNE 11, 2026 | 3:30 P.M. - 5:00 P.M..

988 UPDATES AND IMPACT IN TEXAS

Lone Star B, 2nd Floor

Available Credits: LPC/LMFT/SW, CPE for Accountants

The 988 crisis hotline continues to provide an essential lifeline to Texans. This presentation will provide a brief overview of 988, with a focus on the five Community Centers that operate the Texas call centers. There has been a lot of growth and change since 2022, when 988 became fully operational. Speakers will provide updates from each of the call operator Centers and impacts in Texas, including exciting updates in legislation!

- Nicole Warren, LMFT, Practice Administrator, Integral Care
- Jennifer Battle, MSW, Vice President of Community Access and Engagement, The Harris Center for Mental Health and IDD
- Shay Lett, MBA, System Director of Centralized Access, Crisis, and Navigation, MHMR of Tarrant County
- Stacey Contreras, QMHP, Director of Crisis Call Center, Emergence Health Network
- Susan Castillo, LMSW, 988 Project Director, Bluebonnet Trails Community Services

Learning Objectives:

- » Summarize the 988 crisis hotline structure in Texas and the call flow that takes place when someone reaches 988.
- » List updates regarding the future of 988 in Texas.

BRIDGING THE DIVIDE: SUPPORTING THE MENTAL HEALTH NEEDS OF YOUTH WITH DEVELOPMENTAL DISABILITIES

Texas D, 4th Floor

Available Credits: LPC/LMFT/SW, CPE for Accountants

Youth with developmental disabilities (DD) experience traumatic and stressful events at higher rates and are more likely to struggle with depression, anxiety, and suicidal ideation. Despite this, mental health treatment is often inaccessible for youth with DD. Over last year, the Meadows Institute interviewed Local Mental Health Authorities (LMHAs), Local IDD Authorities, and experts outside of Texas to better understand existing services, innovative approaches, and barriers to meeting the mental health needs of youth with DD. This presentation summarizes the Meadows Institute's findings on how LMHAs/Local IDD Authorities are addressing the mental health needs of youth and young adults with DD, and recommendations for continued improvements.

- Katie Mitten, LMSW, Director of Cross System Integration, Meadows Mental Health Policy Institute
- Laura Merola, MEd, LPC, Director for Child and Family Policy, Meadows Mental Health Policy Institute
- Tunisia Smith, LMSW, Program Supervisor for the Outpatient Behavioral Health Services for People with IDD (OBI), Integral Care

Learning Objectives:

- » Identify and describe three key challenges preventing youth with DD from accessing needed mental health services.
- » Identify strategies for better serving youth with DD and mental health concerns.

CONCURRENT SESSIONS

THURSDAY, JUNE 11, 2026 | 3:30 P.M. - 5:00 P.M.

DATA-DRIVEN CARE: INTEGRATING RESEARCH TO ENHANCE CCBHC CARE AND SUSTAINABILITY

Republic A, 4th Floor

Available Credits: LPC/LMFT/SW, CPE for Accountants, LP

Certified Community Behavioral Health Clinics (CCBHCs) routinely track productivity in volume of clients served and milestones, such as changes in level of care. However, these indicators provide only a partial picture of treatment effectiveness and client experience. Tools like the ANSA/CANS offer structured assessment, but because they are completed at extended intervals, they overlook short-term or session-to-session change. Using Metrocare's experience as a practical model, this presentation highlights how embedding research infrastructure within CCBHCs enables consistent and expansive longitudinal client reporting by helping teams see who is benefiting from current treatment approaches and where adjustments are needed. Using results to modify care may bolster the therapeutic alliance, reduce staff burnout, and support sustainable funding.

- Kyle Blidy, PhD, PMP, Associate Director of Research Development and Outreach, Metrocare
- Erin Kaszynski, PhD, LPC-S, Associate Director of Clinical Education and Research, Metrocare

Learning Objectives:

- » Explain how longitudinal client data collection can support treatment adjustment and decision making.
- » Describe how research integration can support organizational sustainability and program evolution.
- » Apply practical strategies to integrate research workflows into a CCBHC setting.

EMERGENCY DETENTION IN TEXAS: LAW, PRACTICE, AND CROSS-SYSTEM COORDINATION

Lone Star C, 2nd Floor

Available Credits: LPC/LMFT/SW, CPE for Accountants, CME, CLE

This session will provide an overview of emergency detention in Texas, focusing on the legal framework that governs emergency detention decisions and the challenges that arise when psychiatric needs intersect with urgent medical concerns. Based on statewide research and community-informed analysis, the presentation will examine how resource limitations, operational realities, and local variation influence implementation across Texas. It will also identify practical, collaborative approaches that communities are using to improve coordination, clarify responsibilities, and strengthen emergency detention processes within the current statutory framework.

- Kristi Taylor, JD, Executive Director, Texas Judicial Commission on Mental Health
- Kama Harris, JD, Director of Policy and Education, Texas Judicial Commission on Mental Health

Learning Objectives:

- » Describe the legal framework governing emergency detention in Texas and how it applies when psychiatric and urgent medical needs intersect.
- » Analyze how resource limitations, operational realities, and local practices shape emergency detention implementation across Texas communities.
- » Explore practical, collaborative strategies communities are using to clarify roles, improve coordination, and strengthen emergency detention pathways within existing law.

CONCURRENT SESSIONS

THURSDAY, JUNE 11, 2026 | 3:30 P.M. - 5:00 P.M.

FORMULA 6: UNDERSTANDING ALCOHOL USE DISORDER – HISTORY, HARM, AND HOPE

Crockett AB, 4th Floor

Available Credits: LPC/LMFT/SW, CPE for Accountants, CME, NCPD, LP, LCDC

The understanding and treatment of alcohol use disorders (AUD) has evolved dramatically over the past century, shaped by shifting cultural attitudes and scientific progress. Early public health responses—including the American Prohibition era—reflected a moral and legal approach rather than a medical one, ultimately highlighting the limitations of criminalization and fueling later recognition of AUD as a chronic, relapsing medical condition. Today, evidence-based treatment emphasizes a clinical framework supported by several medication options, each targeting different neurobiological pathways involved in craving and relapse. Together, these historical lessons and modern pharmacologic tools underscore the importance of treating AUD with a comprehensive, medically informed strategy.

- Courtney Bearden, RN, PMHNP-BC, Director of Medical Services Administration, Bluebonnet Trails Community Services
- Jonathan Artz, MD, Assistant Medical Director, Bluebonnet Trails Community Services; Clinical Assistant Professor of Psychiatry, Texas A&M School of Medicine

Learning Objectives:

- » Summarize historical context regarding attitudes towards persons with Alcohol Use Disorders, including efforts to reduce alcohol use during the American prohibition era.
- » Identify currently available options for medication assisted treatment of Alcohol Use Disorders, including an overview of the mechanism of action, potential adverse effects and expected clinical outcomes.

LEADING FROM THE MIDDLE: A PROVEN MODEL FOR BUILDING MEASURABLE LEADERSHIP

Lone Star A, 2nd Floor

Available Credits: LPC/LMFT/SW, CPE for Accountants

Leadership culture can't be mandated from the top - it must be built, measured, and modeled from the middle out. In 2024, Gulf Coast Center (GCC) launched GCC LEADS, a comprehensive initiative to strengthen front-line and mid-level managers as the bridge between strategy and daily practice. Grounded in evidence-based frameworks and GCC's HEALTHY values, GCC developed 76 leaders over 12 months through workshops, coaching, peer connection, and applied reflection. This session shares how GCC translated theory into measurable behavior change using quantitative and qualitative data, offers executive, data, and participant insights, explores replicable structures, and includes a brief readiness self-assessment.

- Felicia Jeffery, MA, LPC, Chief Executive Officer, Gulf Coast Center
- Devon Stanley, DSL, PMP, Chief Information Officer, Gulf Coast Center
- Amanda Groller, MEd, LPC, Director of Innovative and Special Projects, Gulf Coast Center

Learning Objectives:

- » Explain how a structured, data-informed approach to leadership development strengthens engagement, accountability, and retention.
- » Identify the core principles, tools, and measurement methods that made GCC LEADS scalable and sustainable across programs.
- » Apply a readiness self-assessment to identify next steps for building and measuring leadership culture within the participant's Center.

CONCURRENT SESSIONS

THURSDAY, JUNE 11, 2026 | 3:30 P.M. - 5:00 P.M.

LIGHTS, CAMERA, CONFIDENCE: MEDIA AND STORYTELLING 101

Crockett CD, 4th Floor

Available Credits: LPC/LMFT/SW, CPE for Accountants

This session prepares leaders and content experts to use powerful storytelling to shape positive public perception and strengthen trust in their work. The art of translating complex topics into human-centered narratives help them resonate with communities, influencers, and decision-makers. Building strong, proactive relationships with local media supports accurate, compelling coverage that resonates with viewers. Through guidance on message development, narrative framing, and confident on-camera presence, leaders gain tools to stay on-point, respond effectively under pressure, and elevate their organization's voice. This session highlights authenticity, empathy, and strategic communication as essential to advancing understanding and support for behavioral health services.

- Danielle Pardue, Director of Business Development and Public Relations, Spindletop Center

Learning Objectives:

- » Explain how development of cross-departmental collaboration can strengthen storytelling efforts for an organization.
- » Describe strategies for shaping positive public perception.
- » Apply tools, such as content development and media relations, to improve organizational messaging and enhance understanding and support for behavioral health services.

STRATEGIC STEWARDSHIP: MANAGING FACILITIES FOR SAFETY, EFFICIENCY, AND RESILIENCE

Republic BC, 4th Floor

Available Credits: LPC/LMFT/SW, CPE for Accountants

Local Mental Health and IDD Authorities face aging infrastructure, limited budgets, and the challenge of maintaining safe therapeutic environments. This session provides leaders and facility managers with a proactive framework to assess infrastructure, prioritize needs, and plan improvements that enhance safety, compliance, and operational resilience. Through practical tools and real-world examples, participants will learn to organize facility data, shift from reactive maintenance to proactive asset management, establish a 10-year replacement plan for critical systems, and build a skilled in-house team to complete small projects safely and cost-effectively. Participants will also gain clear strategies to strengthen facility reliability, reduce risk, and promote long term sustainability.

- Wayne Hill, Director of Facilities, Spindletop Center

Learning Objectives:

- » Develop a proactive facility management framework.
- » Apply practical tools to organize facility data.
- » Strengthen internal maintenance capacity.

CONCURRENT SESSIONS

THURSDAY, JUNE 11, 2026 | 3:30 P.M. - 5:00 P.M.

STRONGER TOGETHER: HOW PEER SUPPORT TRANSFORMS VETERAN FAMILIES

Seguin, 4th Floor

Available Credits: LPC/LMFT/SW, CPE for Accountants, MHPS/RSPS/PSS/CFP

Veteran families navigate constant transitions, heavy responsibilities, and the ongoing impacts of military life, often leading to moments of stress, isolation, or feeling unseen. This session explains how peer support provides essential connection, validation, and empowerment for families who often shoulder these challenges quietly. Participants will learn practical, evidence-based strategies to develop and strengthen peer-led initiatives that foster belonging, resilience, and mental well-being. Through real-life examples and proven approaches, this session will show how peer support bridges gaps in existing services, builds stronger community care, and creates safe, inclusive spaces where shared experiences lead to healing and growth.

- Ashley Craig, MEd, Learning and Development Manager, Veteran Spouse Network - Institute for Military & Veteran Family Wellness at the University of Texas at Austin
- Hannah O'Brien, MSW, Program Director, Veteran Spouse Network - Institute for Military & Veteran Family Wellness at the University of Texas at Austin

Learning Objectives:

- » Apply trauma-informed and inclusive practices to develop or strengthen peer-led support initiatives in professional or community settings.
- » Practice facilitating, leading, or supporting peer networks that create safe, supportive spaces for veteran families.
- » Incorporate evidence-based peer support approaches into practice of care providers to strengthen connection, resilience, and mental well-being among veteran families.

FRANK M. ADAMS AWARDS

OUTSTANDING VOLUNTEER SERVICE AWARDS

Thursday | June 11, 2026 | Center Reception Award Presentation Begins at 6:30pm



The Frank M. Adams Outstanding Volunteer Service Award was established in 1990 in honor of the late Frank M. Adams, a founding member of the Texas Council of Community Centers.

The FMA Award is presented in four categories: Individual, Community, Media, and Board Service. The award recognizes a level of volunteerism that is representative of long-term commitment, is exceptional and far-reaching in scope, diversified in effort, and worthy of statewide recognition.

In 2021, the Gladdie Fowler Award for Outstanding Board Service was added in memory of Ms. Gladdie Fowler, who served the Spindletop Board of Trustees for 35 years and was a longstanding member of the Texas Council Board of Directors.

AWARD PRESENTERS



Judge Drue Farmer
Chair, Board of Directors,
Texas Council of Community Centers



Cary Houston
Chair, Board of Trustees
MHMR Concho Valley

Nominees

INDIVIDUAL

Gloria Villarreal
Nominated by MHMR Concho Valley

MEDIA

Laura Harris, NBC5
Nominated by Metrocare

COMMUNITY

Western Technical College - Commercial
Driving Training Program
Nominated by Emergence Health Network

BOARD

Bob Brown
Nominated by MHMR of Tarrant County
Linda Hooks
Nominated by Community Healthcare

2026 FMA Awards Selection Panel

Brent Phillips-Broadrick
LifePath Systems

Kelley Anderson
MHMR Authority of Brazos Valley

Chris Dillard
Betty Hardwick Center

Judge Roxanne Nelson
Bluebonnet Trails Community Services

JoAnne Harwood
StarCare Specialty Health System

FRANK M. ADAMS AWARDS

INDIVIDUAL AWARD



GLORIA VILLARREAL

Gloria Villarreal is highly deserving of the Frank M. Adams Individual Award in recognition of her lifelong dedication to improving the lives of individuals with intellectual and developmental disabilities (IDD). Across a distinguished 33- year career with MHMR Concho Valley, Gloria consistently went above and beyond through volunteerism and service outside of her formal responsibilities – commitments she continues to this day. She exemplifies the compassion, advocacy, and service this award represents.

Gloria began her career in the early 1990s as a Direct Support Professional in the IDD Day Program, where she quickly became known for her creativity and commitment to personcentered care. Among her many contributions was the development of an

Adult Basic Education program that included a penpal partnership with local students, an inclusive spelling bee, and a formal graduation ceremony that reinforced dignity, achievement, and lifelong learning for individuals with disabilities.

After graduating college, Gloria served for 25 years as an IDD Intake Specialist, becoming a trusted resource for families throughout MHMR Concho Valley's seven-county region. She managed intakes and admissions, maintained the Interest List, and served as a liaison to every school district in the service area.

What truly distinguished Gloria was her extraordinary commitment beyond the workplace. She routinely volunteered her personal time to visit clients and families in the evenings and on weekends, met individuals for lunch, and attended important life events, such as graduations, weddings, and other milestone celebrations. Gloria believes deeply in ensuring every individual feels valued, supported, and celebrated.

Gloria also supported individuals through extracurricular and community-based activities that fostered inclusion and belonging. In one example, she regularly took an individual with IDD on after-hours and weekend outings, providing meaningful companionship and much-needed respite for the caregiver. Her actions reflected genuine care, trust, and joy in spending time with those she served.

Her impact extended deeply to families as well. One parent shared how Gloria provided guidance and reassurance while they navigated raising special needs twins, helping them move beyond guilt and fear to recognize that "different" does not mean "less than." Gloria helped the family embrace the possibility of meaningful and fulfilling lives for their children and continues to check on their well-being today.

As Gloria approached retirement, she discovered a passion for writing poetry as a creative way to reflect on her experience at MHMR Concho Valley. Inspired by the individuals we serve and the colleagues who shaped her journey, her writings embody the compassion, humanity, and selflessness that have defined her life. Through her poetry, Gloria continues to inspire staff and the Board of Trustees to look beyond the ordinary and recognize the deeper meaning and impact of service to others.

Gloria's legacy is not defined by her career, but by the countless hours of volunteer service, encouragement, and personal support she gives so freely to others. Her impact on individuals, families, colleagues, and the broader community will continue to be felt for years to come.

FRANK M. ADAMS AWARDS

COMMUNITY AWARD



WESTERN TECHNICAL COLLEGE

Emergence Health Network nominated Western Technical College for their commitment to advancing mental health awareness and promoting the overall wellbeing of students enrolled in its Commercial Driving Training Program, as well as commercial drivers throughout the region. The school leadership partnered with Emergence to host the “No Load Is Too Heavy to Share” Mental Health Awareness Campaign, which recognizes the unique challenges faced by professional drivers. Issues such as anxiety, depression, and chronic stress are prevalent in the industry due to long periods of isolation, demanding delivery schedules, and ongoing sleep deprivation.

Western Technical College recognizes that preparing students extends beyond technical skills and road safety. Equally important is empowering students with the knowledge and resources needed to care for their physical and mental health. When Emergence approached Western Technical College with the campaign concept, their leadership immediately embraced the initiative, volunteering to host a press conference on campus and distribute promotional materials to students highlighting the 988 Suicide & Crisis Lifeline. For truck drivers and others who spend extended time on the road, this easy-to-remember number ensures access to support anywhere in the United States, regardless of location or route. Thanks to the widespread local media coverage, airing across all local television stations and social media, this important message was significantly amplified, helping to lighten the load and potentially save lives.

Through their proactive leadership and collaboration, Western Technical College has not only demonstrated a genuine, compassionate dedication to supporting the mental health needs of current and future drivers but has also significantly raised public awareness on this crucial issue.

FRANK M. ADAMS AWARDS

MEDIA AWARD



LAURA HARRIS, NBC 5

Laura Harris exemplifies the highest standards of journalism, community leadership, and public service—qualities that make her an extraordinary and deserving recipient of the 2026 Frank M. Adams Media Award. A threetime Emmy Award and Associated Press Award-winning journalist, Laura has built a distinguished career grounded in integrity, compassion, and a deep commitment to elevating the voices and issues that matter most to North Texans.

Since joining NBC 5 in 2018 as co-anchor of NBC 5 Today, Laura has become a trusted presence in households across the DFW region. Her reporting is marked by credibility,

thoughtfulness, and an unwavering dedication to making complex issues understandable and accessible to the public. Her work spans major global events—such as the Tokyo and Paris Olympics and historic political milestones in Cuba—to local stories that educate, empower, and connect communities.

Laura’s impact extends far beyond the newsroom. She has emerged as a powerful advocate for mental health, disability inclusion, housing stability, youth literacy, and community wellbeing. Through her Community Conversations: Call for Change video series, she created a meaningful platform that elevates diverse voices, including mental health professionals, Black leaders, and community advocates. Laura also champions education and youth empowerment. She helped launch NBC 5’s Reading With You literacy initiative, encouraging children to read throughout the summer to prevent literacy loss.

Her service on behalf of Metrocare underscores her heart for community. For six consecutive years, Laura has volunteered as moderator for Metrocare’s Meal for the Minds Luncheon, facilitating nuanced, empathetic discussions surrounding mental health, IDD, and community care. She approaches each event with the diligence of a journalist and the compassion of a true advocate—researching deeply, preparing intentional questions, engaging audiences, and ensuring conversations lead to understanding and impact. Her ability to guide complex dialogue with clarity and grace makes her an invaluable partner.

What sets Laura apart is not only her professionalism, but her character. She embodies service, empathy, inclusivity, and a genuine desire to uplift others. She uses her platform responsibly and purposefully by bringing visibility to vulnerable populations, reducing stigma around mental health, and inspiring meaningful community engagement across North Texas.

FRANK M. ADAMS AWARDS

GLADDIE FOWLER BOARD SERVICE AWARD



WILLIAM "BOB" BROWN

William "Bob" Brown has dedicated more than two decades of distinguished service to My Health My Resources (MHMR) of Tarrant County. As a valued member of the Board of Trustees, he has consistently demonstrated commitment to our mission: We Change Lives. Bob draws on his life experience as a veteran, practicing attorney, and an advocate for individuals with mental illness, substance use disorders, and IDD.

Bob's leadership is grounded in supporting our 2,000 employees so they can best serve our 73,000 patients. Most recently, he served as Board Chair from 2023-25, providing leadership and thoughtful guidance during

periods of transition for our agency and funding. Bob continues to contribute his expertise on the Business and Executive Committees, where his insight and strategic perspective continue to shape organizational priorities. Bob's leadership extends to Austin, where he is our Board Liaison for both the Texas Council and Texas Council Risk Management Fund. His deep knowledge of Community Centers, based on his tenure and commitment to human services, makes him an excellent representative. He ensures there is a Texas Council item on every MHMR board agenda to share updates with his board colleagues.

Bob engages in fostering a culture of employee connection and agency pride. He is often seen wearing an MHMR polo shirt when he participates in employee engagement initiatives, leadership trainings, employee service award presentations, and fundraisers. He is an example of a board member who shows up and thanks staff with his presence, words of encouragement, and gratitude for the work they do. Bob also understands that the impact of Community Centers is based on officials elected locally and in Austin. Bob prioritizes legislative visits to Austin and political events in his district. He has also served on the Board of Directors for the National Council for Mental Wellbeing, attended their conferences, and participated in Hill Day in Washington, DC to represent us on a national level.

Bob has been instrumental in starting new Center programs, such as Liberty House, a temporary residential program for veterans with substance use and/or mental illness. As a veteran, he relates directly with compassion and recognition of their service. Helping navigate the transition in funding from 1115 Waiver to state CCP and DPP programs, Bob has supported grant applications to meet unique needs. He also led us through COVID and into telehealth with investments in technology and people.

Bob serves as a passionate ambassador for MHMR of Tarrant County and the Community Center system at large through civic engagement with elected officials and in his official role on the Board of Directors for the Texas Council of Community Centers. With great energy, imagination, intelligence, and love, Bob represents MHMR, translates MHMR, and connects people to our public mission: We Change Lives.

FRANK M. ADAMS AWARDS

PAST AWARD RECIPIENTS

1991

Individual: Judge C. L. Abernethy (Central Plains MHMR Center)
Media: Abilene Reporter News (Abilene Regional MHMR Center)
Community: Tanglefoot Extension Homemakers (Central Counties Center for MHMR Services)

1992

Individual: Betty Hardwick (Abilene Regional MHMR Center)
Media: KLBK-13 Television (Lubbock Regional MHMR Center)
Community: No Nomination

1993

Individual: Jodie E. Stavinoha (Riceland Regional Mental Health Authority)
Media: Galveston County Daily News (The Gulf Coast Center)
Community: Methodist Hospital School of Nursing (Lubbock Regional MHMR Center)

1994

Individual: Felice S. Klein (MHMR Authority of Brazos Valley)
Media: KTAB-TV (Abilene Regional MHMR Center)
Community: No Nomination

1995

Individual: Charley H. Shannon, PhD (MHMR Services for the Concho Valley)
Media: Denison Herald (MHMR Services of Texoma)
Community: Gatesville Community Volunteers (Central Counties Center for MHMR Services)

1996

Individual: Suzanne Lasko (Tarrant County MHMR Services)
Media: KFXK Fox 51, Longview (Sabine Valley Center)
Community: Troy 4-H Club (Central Counties Center for MHMR Services)

1997

Individual: Norma Henry (The Center for Health Care Services & San Antonio Alliance for the Mentally Ill)
Media: Leslie Sowers, The Houston Chronicle (MHMR Authority of Harris County)
Community: United Service Club, Denison High School (MHMR Services of Texoma)

1998

Individual: Helen Dishong (Tri-County MHMR Services)
Media: KXII Broadcasters, Inc. (MHMR Services of Texoma)
Community: Lufkin Alliance for the Mentally Ill (Burke Center)

1999

Individual: Mary Lou Caldwell (The Gulf Coast Center)
Media: Bonham Daily Favorite (MHMR Services of Texoma)
Community: South Liberty State Center Advisory Board (Tri-County MHMR Services)

2000

Individual: Donald L. Dumas (Austin Travis County MHMR Center)
Media: Herald Democrat (MHMR Services of Texoma)
Community: Llano Crawfish Open, Inc. (Hill Country Community MHMR Center)

2001

Individual: William E. Hall, Jr. (Tri-County MHMR Services)
Media: Fort Worth Star-Telegram (MHMR of Tarrant County)
Community: Church of Jesus Christ of Latter Day Saints, Sherman (MHMR Services of Texoma)

2002

Individual: Frank K. Collins (Spindletop MHMR Services)
Media: Eastland/Callahan County Newspaper Network (Central Texas MHMR Center)
Community: Fayette County Commission for the Mentally Retarded (Bluebonnet Trails Community MHMR Center)

2003

Individual: Genevieve Tarlton Hearon (Austin Travis County MHMR Center)
Media: The Galveston Daily News (The Gulf Coast Center)
Community: Longview AMBUCC (Sabine Valley Center)

2004

Individual: Blanche Ridley (Tri-County MHMR Services)
Media: San Antonio Express News (The Center for Health Care Services)
Community: San Antonio Police Officers Association (The Center for Health Care Services)

2005

Individual: Robert Jimenez (The Center for Health Care Services)
Media: Corpus Christi Caller-Times (MHMR Center of Nueces County)
Community: Brown McCarroll, LLP (Austin Travis County MHMR Center)

2006

Individual: Hartley Sappington (Bluebonnet Trails Community MHMR Center)
Media: Howard County ARC (West Texas Centers for MHMR)
Community: Melissa McEver (Tropical Texas Center for MHMR)

2007

Individual: Beth Holt (Community Healthcare)
Media: Trenton Tribune (MHMR Services of Texoma)
Community: First Baptist Church of Conroe (Tri-County MHMR Services)

2008

Individual: Jamie Travis (The Gulf Coast Center)
Media: Gainesville Daily Register (MHMR Services of Texoma)
Community: Tarrant/Dallas County Toy Run Board of Directors (MHMR of Tarrant County & Metrocare Services)

2009

Individual: George Hernandez (The Center for Health Care Services)
Media: Mike Henry - KBST News (West Texas Centers for MHMR)
Community: Mayor's Mental Health Task Force Monitoring Committee (Austin Travis County MHMR Center)

2010

Individual: Karen M. Garber (MHMR Authority of Brazos Valley)
Media: The Van Alstyne Leader (MHMR Services of Texoma)
Community: The Arc of Greater Beaumont (Spindletop Center)

2011

Individual: Mary Ernestine Butler (Texana Center)
Media: Victoria Advocate (Gulf Bend Center)
Community: Alcoa Fastening Systems (Heart of Texas Behavioral Health Network)

2012

Individual: Barbara Duren (Tri-County Services)
Media: Karin McCay - KCBD News (StarCare Specialty Health System)
Community: The Rural East Texas Health Network (Burke Center)

2013

Individual: Eileen McDowell "The Art Lady" (Texana Center)
Media: North Texas e-News (Texoma Community Center)
Community: The Marc Center (Central Counties Services)

2014

Individual: Stephanie Contreras (Tropical Texas Behavioral Health)
Media: Joe Pollaro (Texoma Community Center)
Community: Mental Health Connection of Tarrant County (MHMR of Tarrant County)

2015

Individual: Judge Polly Spencer (The Center for Health Care Services)
Media: KTEN News (Texoma Community Center)
Community: Legacy Ford (Texana Center)

2016

Individual: Harold Wright (Texoma Community Center)
Media: Midland Reporter-Telegram (Permian Basin Community Centers)
Community: Abilene Christian School (Betty Hardwick Center)

2017

Individual: Marjorie "Ms. B" Boniface Balz (Central Counties Services)
Media: KTRE-TV (Burke)
Community: Lubbock County Sheriff's Department (StarCare Specialty Health System)

2018

Individual: Jacqueline "Jackie" Shannon (MHMR Services for the Concho Valley)
Media: NBC 5 (Metrocare Services)
Community: VFW Post 3278 (Metrocare Services)

2019

Individual: Colonel Howard Daniel, Jr. (Burke)
Media: Nicole Hickl, KGBT-TV CBS 4 News (Tropical Texas Behavioral Health)
Community: Grace Creek Church (Community Healthcare)

2020

Individual: Dianne Hickey (StarCare Specialty Health System)
Media: KMHT Radio 103.9 (Community Healthcare)
Community: Some Other Place (Spindletop Center)

2021

Individual: Wendy Perrott (LifePath Systems)
Media: Shrink Box Podcast (Tropical Texas Behavioral Health)
Community: UTEP Collegiate Services - Ric Romero (Emergence Health Network)
Board: Brian Shannon (StarCare Specialty Health System)

2022

Community: Binky Patrol (LifePath Systems)
Board: Jill Martinez (Metrocare Services)

2023

Individual: Shawn Barnes (Nueces Center for MHID)
Community: Chula Chasers (MHMR of Tarrant County)
Board: Margaret Jones (PermianCare)

2024

Individual: Deborah Tomai (Tropical Texas Behavioral Health)
Media: Avery Martinez, KVIA-TV (Emergence Health Network)
Community: Morton Salt (Andrews Center)
Board: Dr. Rick Crawford (LifePath Systems)

2025

Individual: Cookie Joe Arthur (Texana Center)
Media: Shaley Kidwell, KCBD-TV (StarCare Specialty Health System)
Board: Margaret "Margie" Morris (Texoma Community Center)

COMMITTEE MEMBERS

TEXAS COUNCIL OF COMMUNITY CENTERS PUBLIC INFORMATION, EDUCATION AND TRAINING COMMITTEE

CARY HOUSTON
MHMR Concho Valley

DAVID COZADD
Burke

DENNIS YOUNG
Texana Center

ELIJAH ANDERSON
Betty Hardwick Center

FRANK COFFIN
Spindletop Center

LARRY ADAMS
Texas Panhandle Centers

TEXAS COUNCIL OF COMMUNITY CENTERS 2026 CONFERENCE PLANNING COMMITTEE

CARRIE PARKS
Metrocare

DANIELLE SNEED
Texoma Specialty Counseling

DIANA LARA
Emergence Health Network

HEATHER CHAMPION
Spindletop Center

DR. MARIA QUINTERO-CONK
Tri-County Behavioral Healthcare

DR. MARK JANES
Bluebonnet Trails Community Services

MARTHA SANDERFORD-SMITH
MHMR of Tarrant County

MELANIE GANN
Lakes Regional Community Center

RANDA HAYWOOD
Andrews Center

SEAN MANTEY
MHMR of Tarrant County

VICTORIA SAN MARTÍN
MHMR of Tarrant County

JACQUELIN WANG
Texas Council of Community Centers

MARIA RÍOS
Texas Council of Community Centers

PAT HOLDER
Professional Event Services

CAMINO REAL COMMUNITY SERVICES AND THE CENTER FOR HEALTH CARE SERVICES 2026 CO-HOST CENTER COMMITTEE

JELYNNE LEBLANC JAMISON
Chief Executive Officer
The Center for Health Care Services

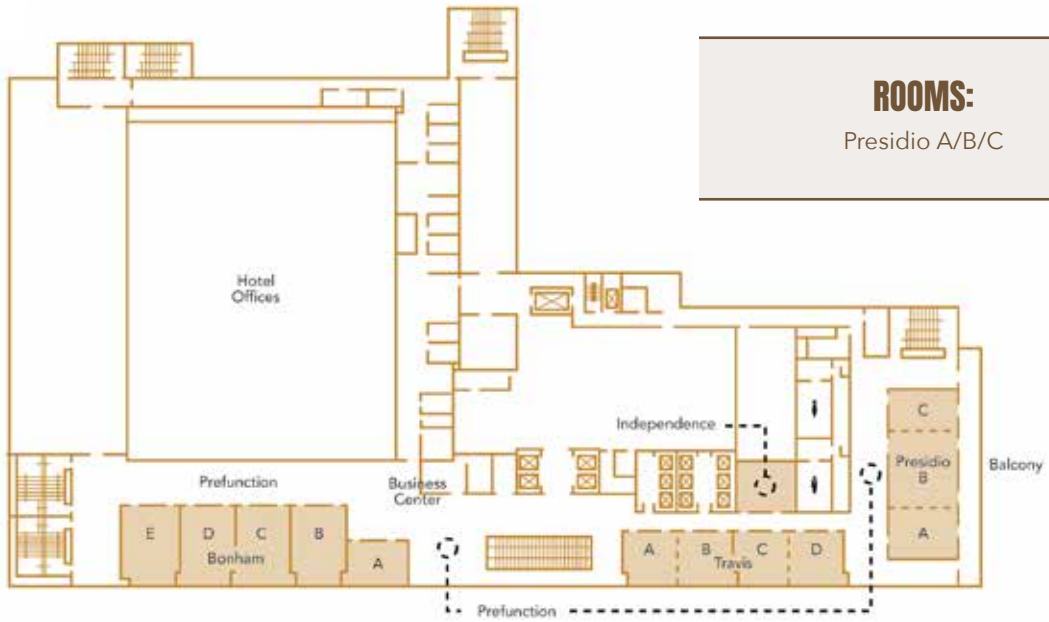
ALLISON GREER FRANCIS
Vice President of Public Affairs
The Center for Health Care Services

CARLA RIEDL
Special Projects Manager
The Center for Health Care Services

VERONICA SANCHEZ
Executive Director
Camino Real Community Services

CHERI BOUCHER
Executive Assistant and Board Liaison
Camino Real Community Services

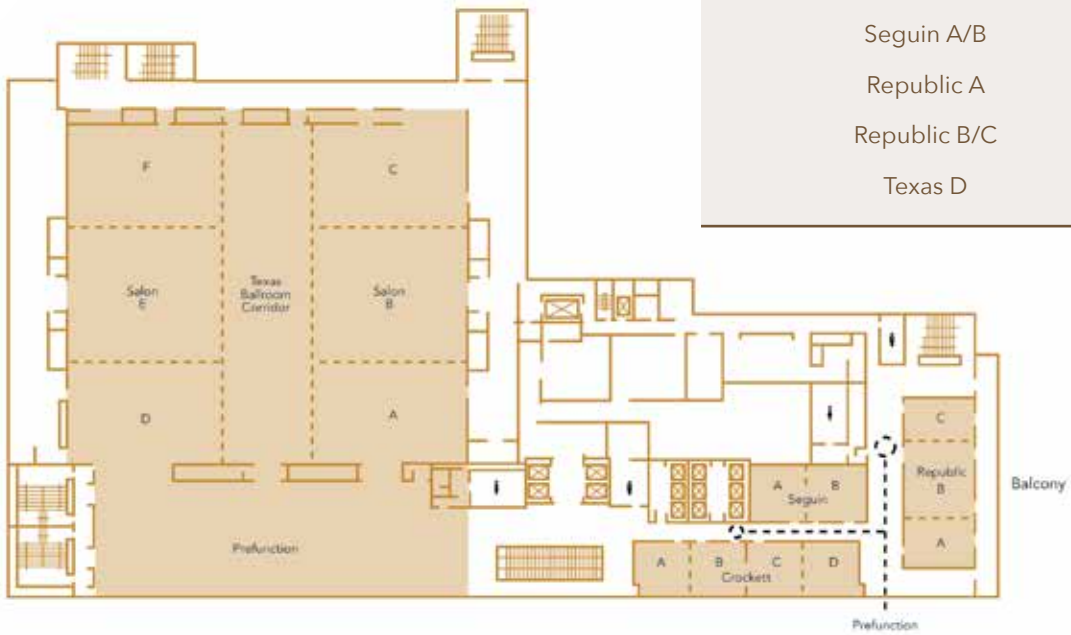
THIRD FLOOR



ROOMS:

Presidio A/B/C

FOURTH FLOOR



ROOMS:

Texas Ballroom A/B/C/E/F
(Exhibit Hall)

Crockett A/B

Crockett C/D

Seguin A/B

Republic A

Republic B/C

Texas D

A photograph of the Houston skyline at sunset. The sky is a mix of purple, pink, and blue. Several skyscrapers are visible, some with lights on. In the foreground, there is a green lawn and some trees.

**SAVE THE
DATE!**

**2027 TEXAS COUNCIL
CONFERENCE
JUNE 23-25, 2027**

WESTIN GALLERIA, HOUSTON, TX